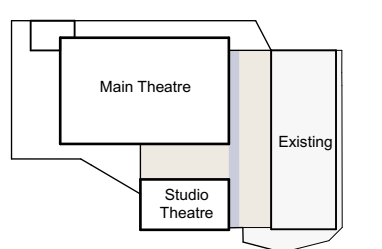


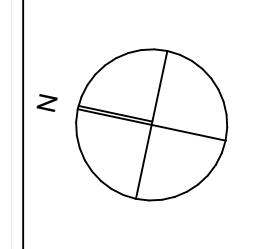
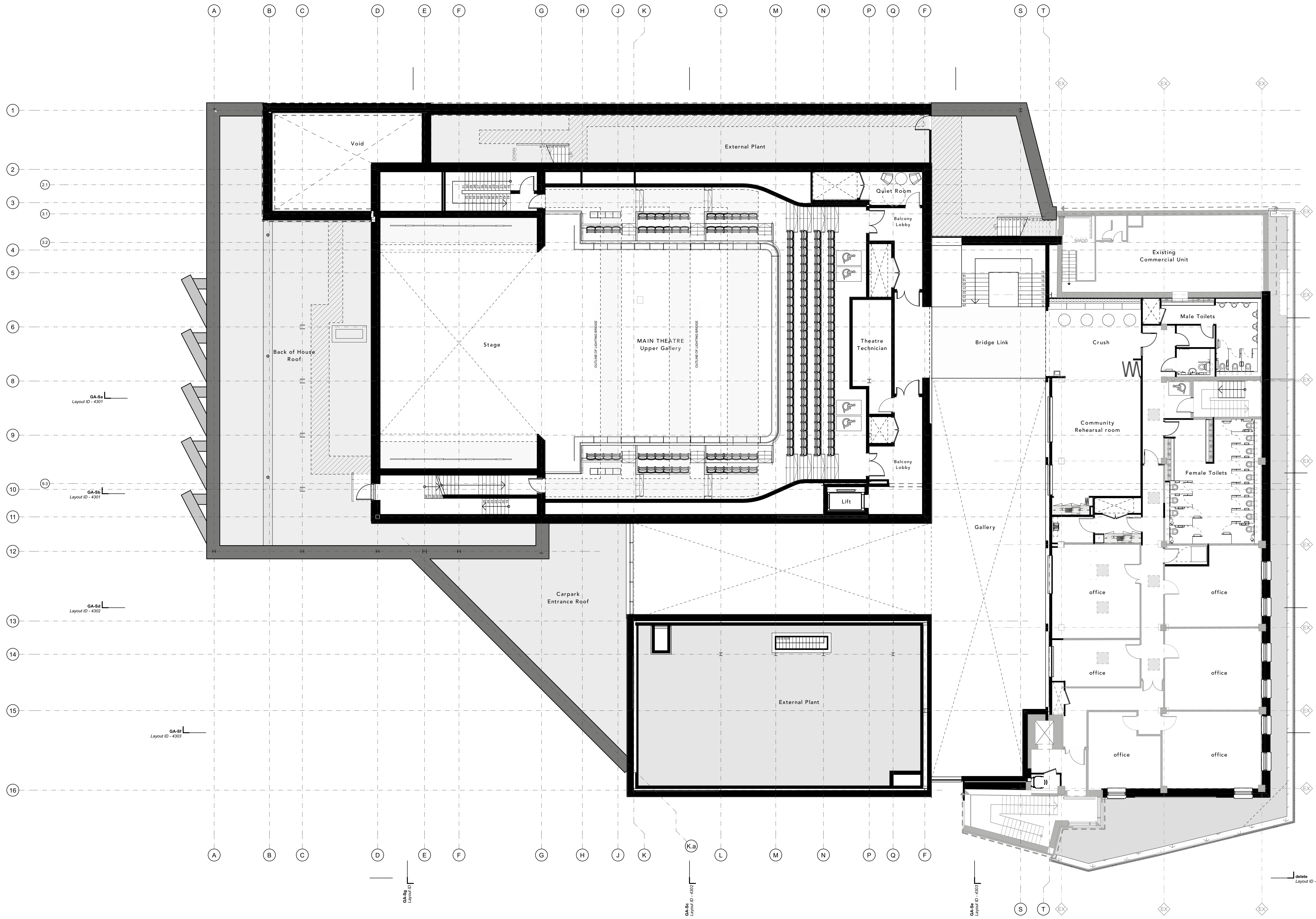
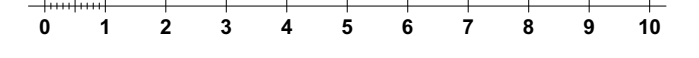
**GA PLAN -  
FIRST FLOOR  
+4,200mm (120.5m)**

This document is © Bond Bryan Architects Ltd. If in doubt ASK. Drawing measurements shall not be obtained by scaling. Verify all dimensions prior to construction. Immediately report any discrepancies on this document to the Originator. This document shall be read in conjunction with associated models, specifications and related consultants' documents.

**Key plan**



**North**

P01	Issued for Planning	RM	14/05/2024
Rev	Description	Drawn	Checked



**BOND BRYAN**  
 e info@bondbryan.co.uk  
 w www.bondbryan.co.uk

**Telford & Wrekin Council**



**Telford Theatre**  
 Limes Walk, 19 Limes Rd, Telford TF2 6EP

<b>Proposed First Floor Plan</b>	
Originator project ref <b>23070</b>	Purpose of Issue <b>Stage 3</b>
Scale(s) <b>1:125</b>	Revision description <b>Preliminary</b>
Paper size <b>A1</b>	
project originator volume level type role number <b>TTH-BBA-ZZ-01-DR-A-2250</b>	revision <b>P01</b>