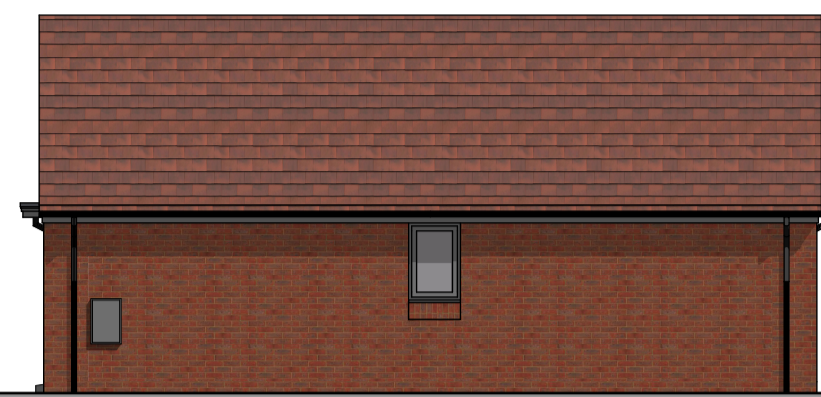


**TYPE G**  
PLOTS 39 40



FRONT ELEVATION



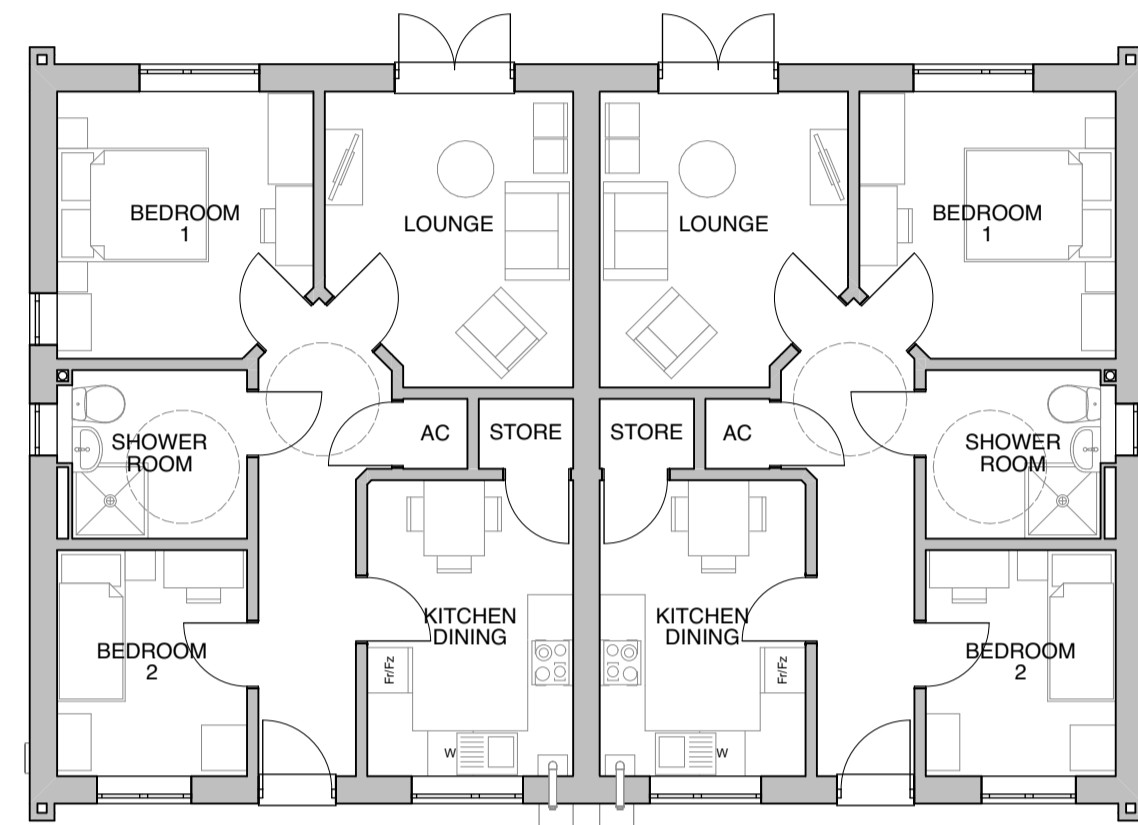
SIDE ELEVATION



REAR ELEVATION



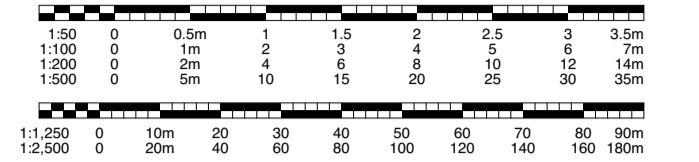
SIDE ELEVATION



GROUND FLOOR

TYPE G  
2 BEDROOM BUNGALOW  
GIA 61.79M<sup>2</sup>  
STORAGE 2M<sup>2</sup>  
M4 CATEGORY 2

**NOTE:**  
Do not scale except for planning purposes. All dimensions to be checked on site. This drawing is copyright and may not be reproduced without written consent.  
All works to be carried out in accordance with relevant British and European Standards and Codes of Practice. All products to be CE marked and used in accordance with manufacturer's recommendations and applicable BBA certificates. Any conflicts to be notified to the architect immediately.  
This drawing to be read in conjunction with all relevant Architect's and other Specialists drawings, details and specifications.



**MATERIALS KEY**

-  Red multi facing brick.
-  Buff multi facing brick.
-  Dark red multi facing brick.
-  Saw-toothed projecting brick detail panel in corresponding brick. Window cills above brick feature extended to protect top edge.
-  Red brindle interlocking double plain concrete roof tiles, with corresponding mechanically fixed ridge tiles and dry verge.
-  Grey interlocking double plain concrete roof tiles, with corresponding mechanically fixed ridge tiles and dry verge.
-  Dark grey window and door frames. Composite door leaf to entrance doors. Projecting brick soldier course cill.
-  Obscured glazing to bathroom and WC windows.

Dark grey fascias and soffits to correspond with window and door frames.  
Dark grey meter box covers to correspond with window and door frames.  
Entrance porches (as shown):  
- Proprietary dark grey finished GRP porch canopies to correspond with window and door frames.  
- Flat roof porch supported on brick pier and powder coated steel posts. PVCU fascia and soffits and posts all dark grey finished to correspond with window and door frames.  
Black PVCU rainwater goods.

**TYPE H**  
PLOTS 9 10



FRONT ELEVATION



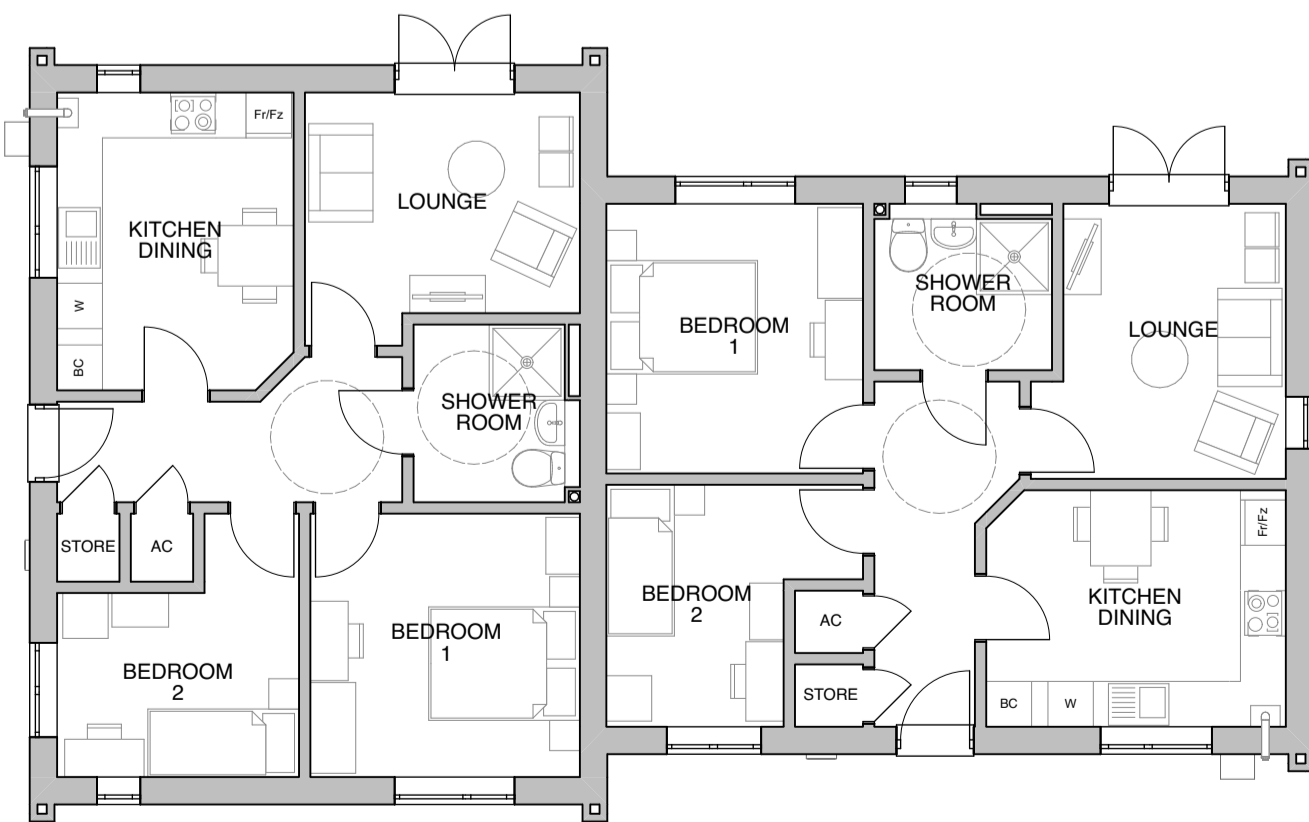
FRONT ELEVATION



SIDE ELEVATION



REAR ELEVATION



GROUND FLOOR

TYPE H  
2 BEDROOM BUNGALOW  
GIA 61.98M<sup>2</sup>  
STORAGE 2M<sup>2</sup>  
M4 CATEGORY 2

C	Type G roof design adjusted.	05/01/21	MA	MA	KD
B	Type H reconfigured. Materials key updated.	16/12/20	MA	MA	KD
A	Side window added to Type G provide natural site surveillance.	28/10/20	MA	MA	KD
	First issue.	09/09/20	MA	MA	KD
Revisions		Date	Drawn	Checked	Approved

Client  
**The Wrekin**  
Housing Group

Project  
**Old Park, Telford**

Drawing Title  
**House Types G and H**

Drawing Scale & Format  
**1:100 @ A1**

Drawing Status  
**PLANNING**



Project No. - Drawing No. - Rev.  
**K968-041(C)**