



Telford & Wrekin
Co-operative Council

Protect, care and invest
to create a better borough

Telford and Wrekin Becoming Carbon Neutral

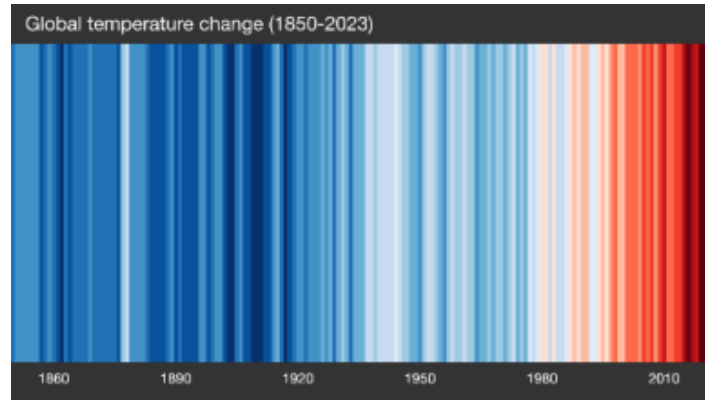
Environment Scrutiny 4th December 2024

Ian Wykes - Climate Change & Sustainability Team Leader

Introduction

2023/24

- 2024 first year to breach 1.5C increase
- Adaptation Risk Register

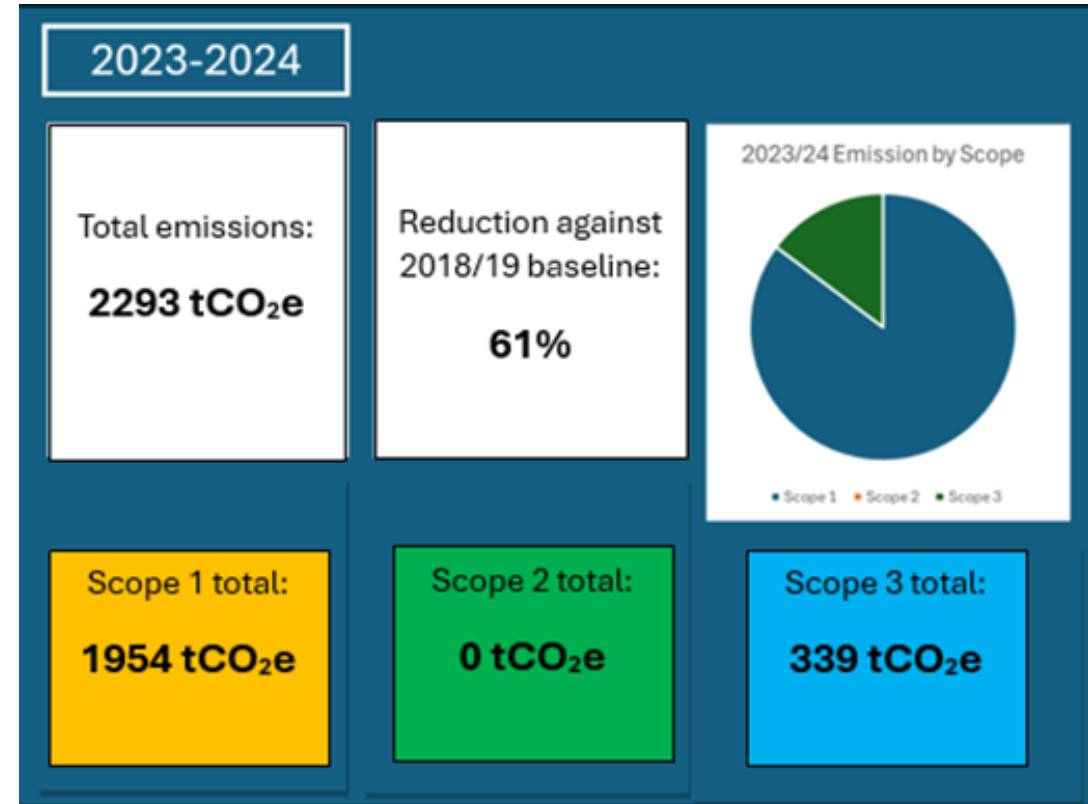
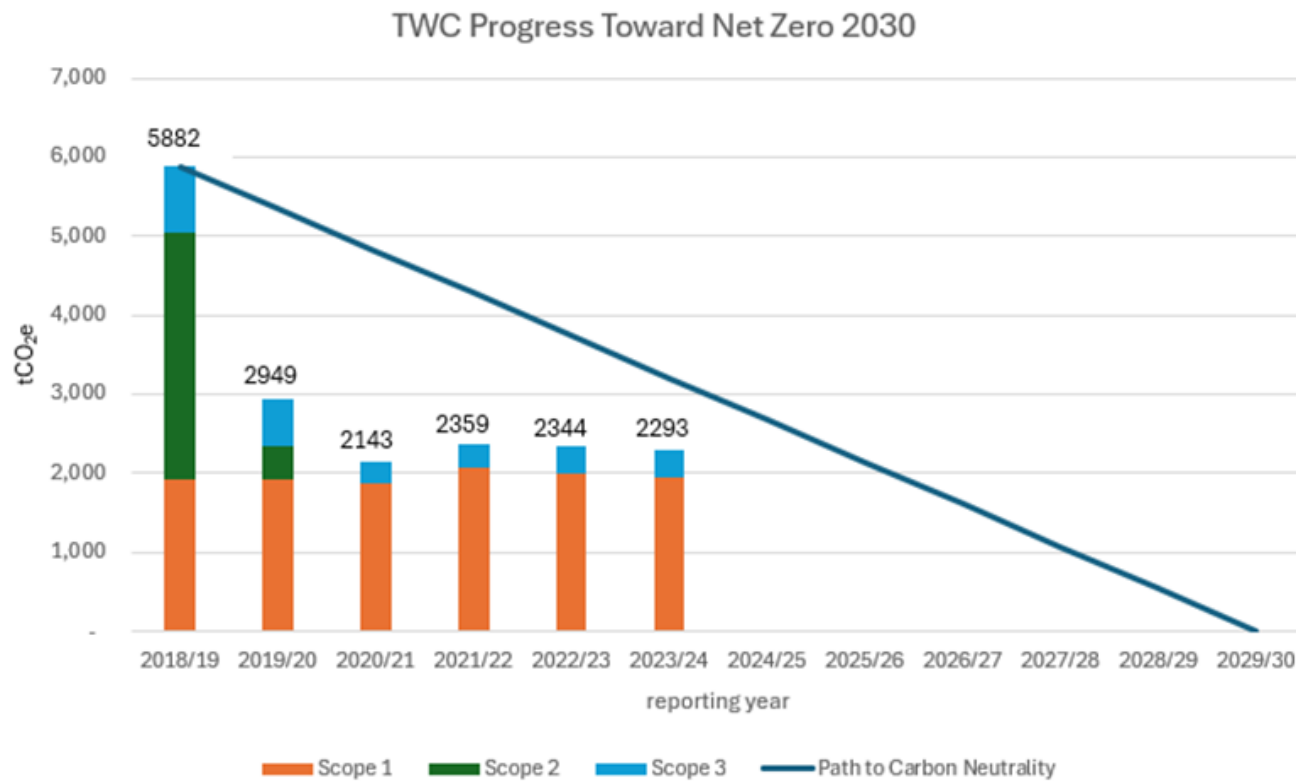


Co- benefits

- Financial
- Wellbeing
- Health
- Economic



Progress to date



Operational Estate

Oakengates Leisure Centre

- £2.2m investment
- Air source heat pump
- Insulation
- EPC C – EPC B



Horsehay Village Golf Course

- Solar panels
- Electric vehicle charging points
- Battery storage
- Energy saving of 65MWh (4.2MWh average household)



Wellington Leisure Centre

- £1.1m PSDS grant
- Air source heat pump
- Insulation
- 70tCO₂e saving

Other property

The Quad

- Air source heat pumps
- Solar panels
- EPC A

NuPlace

- Donnington Wood - 30 homes EV and PV
- 7 built to Future Homes Standard

Station Quarter

- 189 homes
- EPC A - environmental performance
- EPC B -energy

Property Investment Portfolio

- Orchard Park - solar panels
- Hortonwood12 and Ni Park (Phase 2) - solar panels and LED lighting



Affordable Warmth

Home Upgrade Grant (HUG1)

- 22 measures
- Currently have 25 properties in the application process (HUG2)

Local Authority Delivery Scheme (LAD2)

- 50 homes in Sutton Hill, with 77 energy efficiency measures,
- Saving £640 pa
- Saving 0.6t CO₂e pa

Warm and Well Telford

- Low-cost high-impact measure
- 50 signed up so far

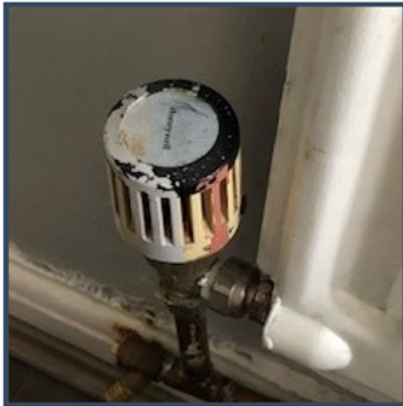
Future Ready Homes initiative

- Working with Marches Energy Agency
- Aim to help 2,500 householders
- Local contractors
- The Retrofit Skills Home project

Warm & Well - Arleston

Before

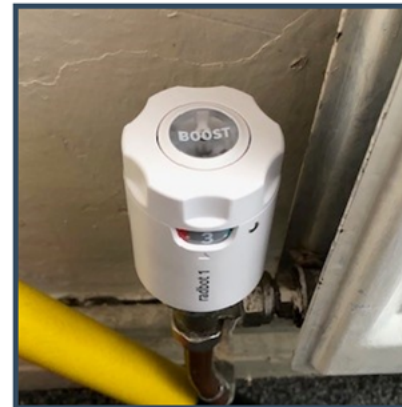
The householder applied for the Warm and Well scheme as their front door was wooden. The door was rotting away and letting in draughts. TRVs were old and ineffective.



After

Householder comments:

“Excellent service, work was carried out very neat and very happy with the service.”



Would you recommend this scheme?

“Yes, excellent scheme to help others who are struggling financially.”

Transport

Off road routes

- Telford Central Oakengates walking and cycling routes £1.9m investment
- Improvements to Silkin Way

Bikehub

- Now includes adapted bikes

Local EV Infrastructure fund (LEVI)

- £1.2m on street charging points
- Delivery 2005-2009

Telford Staff Car Club



Biodiversity

- Further development of the Local Nature Recovery Strategy
- Wildflower meadows 38 areas 28 sites
- Buglife B-Line project
- Dothill and Shawbirch Local Nature Reserves retained Green Flag Status
- LNR declarations at Langleyfields and Horsehay and Simpsons Pools.



Climate Change Partnership

- Conference – October 2023
- Establishment of Community Forum
- Telford Sustainability and Energy Cluster
 - 26th February 2024 Visit to Tyesley Energy Park
 - 8th March 2024 Telford Energy Solutions Summit
 - 20th June 2024 - visit to Lyreco

