

TELFORD & WREKIN COUNCIL

HEALTH & WELLBEING BOARD – 6 JUNE 2019

EARLY HELP STRATEGY AND 0-19 HEALTHY CHILD PROGRAMME UPDATE

REPORT OF THE SERVICE DELIVERY MANAGER, CHILDREN’S SAFEGUARDING & EARLY HELP; AND CONSULTANT IN PUBLIC HEALTH

1. PURPOSE

This report provides a brief summary of the development of the Early Help Strategy 2018-2020 (Appendix 1) to provide the context to the verbal update to the Board on the priorities of the Strategy.

2. BACKGROUND

The development of the Early Help Strategy was driven through multi-agency consultation and engagement and oversight by the Children & Families Partnership. Throughout the process of developing and updating the strategy, partners reinforced the need to:

- Develop emotional resilience and healthier lifestyles
- Embed a partnership change in practice to addressing early help and measuring outcomes
- Maximise local community assets to deliver early help and reduce demand on specialist and high tier services

Through this process, the Early Help Common Assessment Framework (CAF) was replaced by a new Early Help Assessment, along with an updated threshold document and toolkit. The threshold document sets out the criteria to access children services. It is an essential part of our partnership arrangements to safeguard and promote the welfare of children. The Assessment was launched in January 2019.

The strategy reinforces that “Early Help” is everyone’s responsibility. The implementation of the strategy, assessment and threshold will enable a consistent message to be communicated to families across the Borough.

3. LOOKING FORWARD

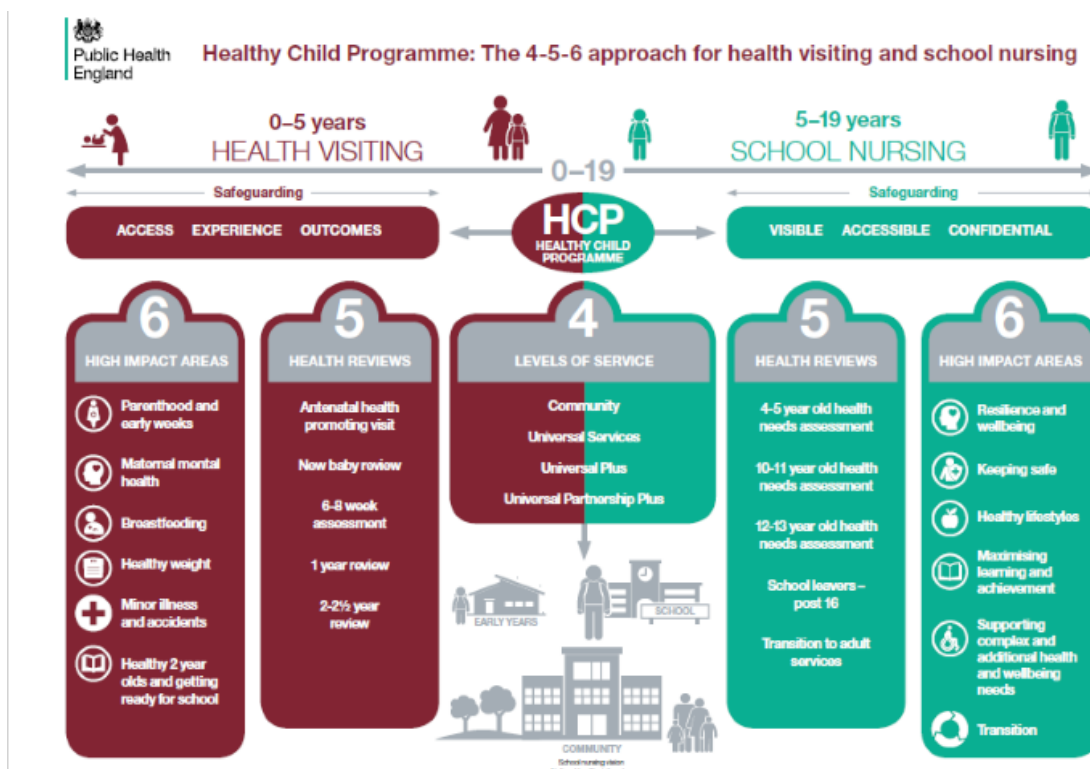
The delivery of the Early Help Strategy is overseen by the Children & Families Partnership, however, governance and accountability is under review as part of the wider review of local safeguarding partnership arrangements required in the statutory guidance Working Together to Safeguard Children 2018¹.

¹ <https://www.gov.uk/government/publications/working-together-to-safeguard-children--2>

4. HEALTHY CHILD PROGRAMME (0-19 YEARS) COMMISSIONING UPDATE

Overview

The Healthy Child Programme (HCP) framework is a robust evidence-based approach aimed at supporting children and young people across the life course, from early years to school age. The HCP aims to enhance and sustain health improvement opportunities, whilst reducing demand on crisis services, through the offer of universal and targeted interventions for children and their families (see below the Public Health England model). The programme contributes to improving health and wellbeing outcomes for children and young people, by identifying additional needs early, building resilience and reducing health inequalities and therefore contributes to the Telford and Wrekin Early Help Strategy vision and principles. The local programme will be delivered in line with national expectations, with the service working across the Continuum of Need, with a focus on local priorities e.g. excess weight.



Commissioning Arrangements

The Council's current contract for The Healthy Child Programme (0-19 years) is due to end 31st August 2019. The commissioning process, to design a new integrated model of delivery from 1st September 2019 was undertaken during 2018/19, led by the Public Health Team. Potential bidders were invited to submit tenders in January 2019 and these were evaluated in March 2019 by a multi-agency panel including representatives from CCG, safeguarding, GP, PODS, data and intelligence, HR, education. Following the evaluation the successful provider (Shropshire Community Health NHS Trust) was awarded the contract for the HCP service.

The new model of delivery proposed by Shropshire Community Health NHS Trust has been co-designed with staff utilising skills, experience and expertise. As a result a new innovative model has been developed in order to meet the needs of the Telford & Wrekin population. The vision of the HCP (0-19 years) service is to work collaboratively with key partners to lead and co-ordinate local delivery of the HCP (0-19 years) providing innovative, flexible and responsive support to families across Telford & Wrekin to promote optimal health and wellbeing. The new HCP (0-19 years) service will commence 1st September 2019.

Report prepared by Jessica Tangye, Partnership Manager, Organisational Delivery & Development: 01952 382186; Helen Onions, Public Health Consultant, Health & Wellbeing.