

Borough of Telford and Wrekin

Health and Wellbeing Board

24 November 2022

ICS Update: Developing our ICP and draft Integrated Care Strategy

Organisation: NHS Shropshire, Telford and Wrekin

Report Author/s: Nicola Dymond – ICB Director

1.0 Recommendations for decision/noting:

The board is asked:

- 1.1 to note the detail contained in the report;
- 1.2 to note the statutory requirements for ICBs and LA's, as core members of the system wide ICP, to develop an Integrated Care Strategy;
- 1.3 to note that this strategy must be informed by the work of the HWBs and through engagement with local partners and communities;
- 1.4 to note approval of the Terms of Reference of the Shropshire, Telford, and Wrekin ICP.

2.0 Purpose of Report

2.1 This report is an update to the summary of the Integrated Care System (ICS) development programme across Shropshire, Telford and Wrekin presented at the last meeting of this board.

This paper is intended to provide an update on progress made on:

- the establishment of the Integrated Care Partnership (ICP)
- the development of the Integrated Care Strategy (IC Strategy) for Shropshire, Telford and Wrekin

3.0 Background

ICP Development

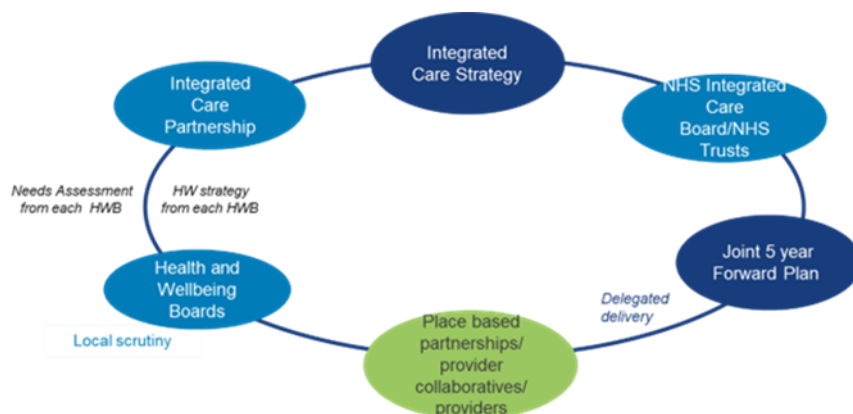
3.1 On 5 October 2022 the first statutory meeting of the Shropshire, Telford and Wrekin Integrated Care Partnership (STW ICP) took place, hosted by Telford Council. Agenda items discussed were Ways of Working, Guidance on

Development of Integrated Care Strategy, Headlines of the JSNA for Shropshire and Telford & Wrekin, Health & Wellbeing Strategies and ICS Priorities. The Terms of Reference of the ICP were signed off in this meeting.

- 3.2 An extraordinary meeting of the ICP has been booked for 21 December 2022 to sign off the draft IC Strategy. The ICP will meet three times in its first year of operation and then decide on the frequency of meetings in subsequent years.

Integrated Care Strategy (IC Strategy)

- 3.3 An IC Strategy development working group, comprised of ICB, Local Authority and local Health Watch members has been meeting regularly to progress the development of the draft IC Strategy.
- 3.4 As the IC Strategy will be shaping the 5-year forward plan and influencing partner and place plans and strategies the ICP needs to assure stakeholders and partners across the system are involved in its development. The place level knowledge of HWBs will be an integral part of the work of the ICS to improve health and care outcomes and experiences for the population of Shropshire, Telford and Wrekin.



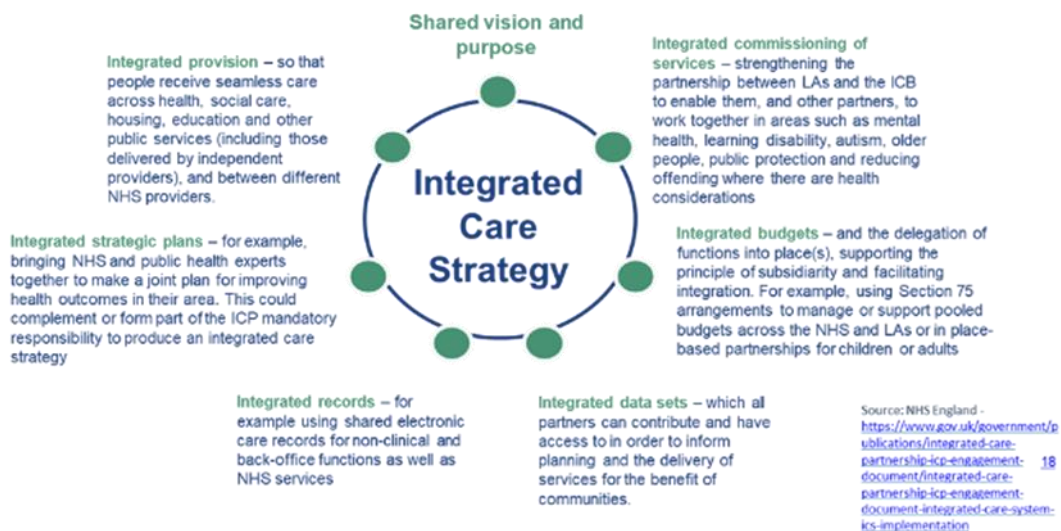
Legislative criteria

- 3.5 The Department of Health and Social Care published statutory guidance on the Integrated Care Strategy in July 2022, with the expectation that by December 2022 each ICP will be able to publish an interim Integrated Care Strategy. The draft strategy must include the criteria set out below in order to meet legislative requirements:

INTEGRATED CARE STRATEGY	
<i>An integrated care partnership must prepare a strategy (an "integrated care strategy") setting out how the assessed needs in relation to its area are to be met by the exercise of functions of the ICB, partner local authorities and NHS England</i>	
MUST	MAY
Involve people who live and work in the area	Include a statement on how other related public services can be more closely integrated with health and social care
Involve local Healthwatch organisations	
Have regard to the NHS Mandate	
Have regard to any guidance issued by the Secretary of State for Health and Social Care	
Consider the extent that needs can be met through section 75 agreements	
Publish each strategy and give a copy to each LA and ICB	

Key components considered for the draft IC Strategy

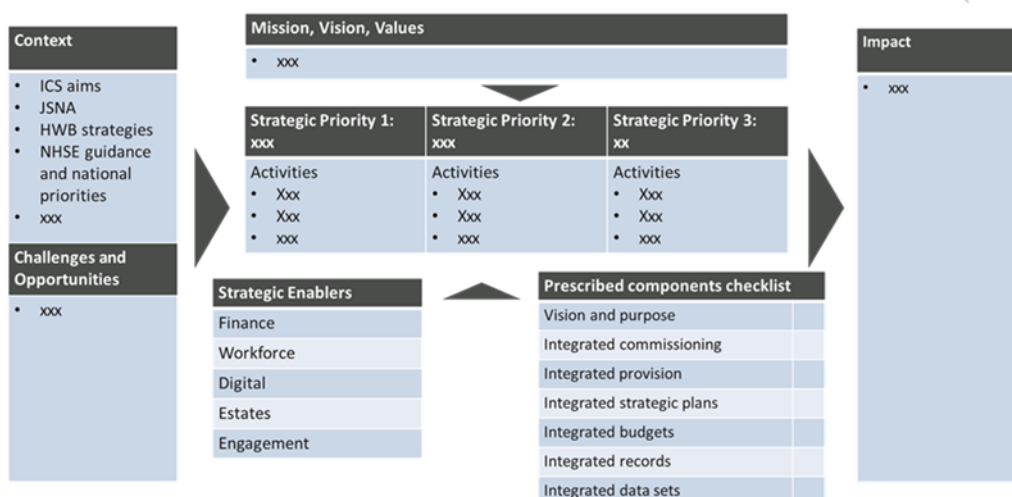
How - Integrated Care Strategy components



Proposed Framework

3.6 Following a desktop research exercise on strategy examples from other health organisations and engagement with a number of ICSs (facilitated by Midlands and Lancashire CSU) the framework below was selected by the working group and is proposed as the overall structure for the STW draft IC Strategy:

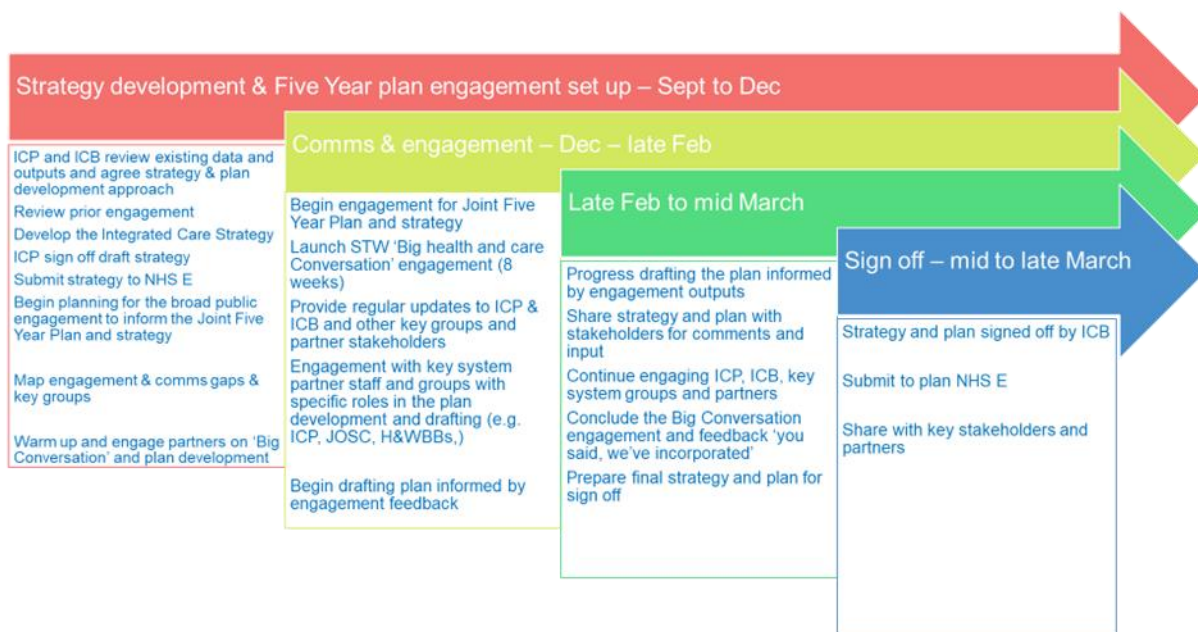
Shropshire, Telford and Wrekin ICP – Integrated Care Strategy - framework



17

- 3.7 Elements from current local Health and Wellbeing Strategies, ICB strategies, and key components as set out above will be incorporated into the draft IC Strategy.
- 3.8 Extensive communication of and engagement with the draft IC Strategy are being planned and coordinated amongst the communication teams within the ICB, the local authorities and other system partners.
- 3.9 An outline of the draft IC Strategy was presented to attendees of an engagement workshop on 16 November 2022. Feedback and inputs of participants will be included in further iterations.
- 3.10 An outline of the draft IC Strategy will be presented to Health and Wellbeing Boards, Health and Oversight Scrutiny Committees (HOSC) and the ICB Board during November and December with the aim for the draft IC Strategy to be signed off and published by the mandated date of 31 December 2022.

Proposed comms and engagement activities



4 Summary of main proposals

- 4.1 To note the detail contained in the report
- 4.2 To note the statutory requirements for ICBs and LA's, as core members of the system wide ICP, to develop an Integrated Care Strategy.
- 4.3 To note that this strategy must be informed by the work of the HWBs and through engagement with local partners and communities.
- 4.4 To note approval of the Terms of Reference of the Shropshire, Telford, and Wrekin ICP

5 Alternative Options

- 5.1 No other alternative options are being considered.

6 Key Risks

- 6.1 There is a risk that the mandated publication date of 31 December 2022 cannot be met if Health and Wellbeing boards do not agree with the proposed Integrated Care Strategy.

7.0 Council Priorities

- 7.1 Health and Wellbeing of and addressing health inequalities within the population of the Borough of Telford and Wrekin

8.0 Financial Implications

- 8.1 Currently no financial implications to consider.

9.0 Legal and HR Implications

9.1 Statutory obligation to publish a draft Integrated Care Strategy by 31 December 2022.

10.0 Ward Implications

10.1 Implications for the health and wellbeing of the population of all wards.

11.0 Health, Social and Economic Implications

11.1 Implications set out in the Telford and Wrekin Health and Wellbeing Strategy 2020/21 – 2022/23

12.0 Equality and Diversity Implications

12.1 No specific implications

13.0 Climate Change and Environmental Implications

13.1 No specific implications.

14.0 Background Papers

None.

15.0 Appendices

None.

16.0 Report Sign Off

Signed off by	Date sent	Date signed off	Initials
Nicola Dymond Director of Strategy and Integration – NHS STW	15/11/2022	15/11/2022	ND