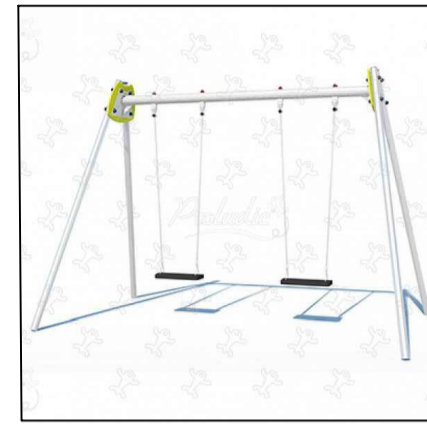


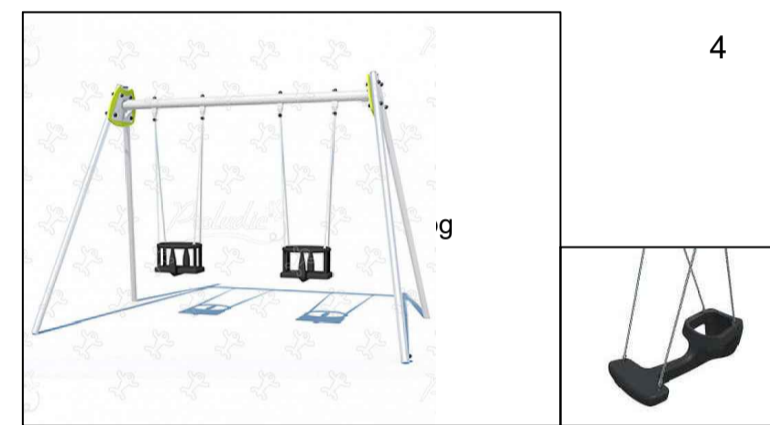
1 Proludic Adventure J38501 multiplay equipment to be supplied by Proludic or equal approved. To be installed to manufacturer's recommendations.



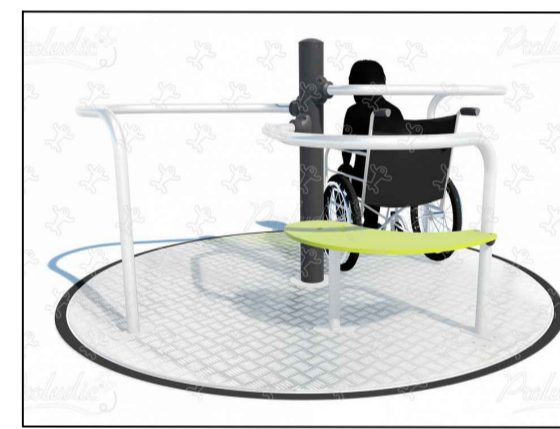
2 Proludic J472swing to be supplied by Proludic or similar approved. To be installed to manufacturer's recommendations.



3 Proludic Bilbox J45023 multiplay equipment to be supplied by Proludic or equal approved. To be installed to manufacturer's recommendations.



4 Proludic J474 swing to be supplied by Proludic or similar approved. With one cradle seat and one tango seat. To be installed to manufacturer's recommendations.



5 Proludic J2409 spinner to be supplied by Proludic or similar approved. To be installed to manufacturer's recommendations.



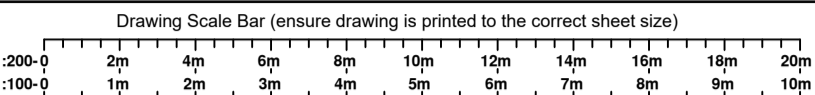
6 Proludic J858 springer to be supplied by Proludic or equal approved. To be installed to manufacturer's recommendations.



7 Proludic J443 swing to be supplied by Proludic or equal approved. To be installed to manufacturer's recommendations.

© 2021 RPS Group

Notes
 1. This drawing has been prepared in accordance with the scope of RPS's appointment with its client and is subject to the terms and conditions of that appointment. RPS accepts no liability for any use of this document other than by its client and only for the purposes for which it was prepared and provided.
 2. If received electronically it is the recipient's responsibility to print to correct scale. Only written dimensions should be used.
 3. This drawing should be read in conjunction with all other relevant drawings and specifications.



Key

- Proposed specimen tree planting - Feature Tree (GreenBlue Urban ReRoot barriers to be installed where required)
- Proposed shrub / herbaceous planting
- Black wet pour surfacing or similar approved. To LPA recommendations.
- 900m high metal hoop-top railings to play area surround with self-closing gates
- Galvanized steel framed seat (BX144010-BP) with hardwood iroko timber slats and tubular end frames. To be root fixed & supplied by Brouse or equal approved. (No.2)
- Steel litter bin (BX45 2561). To be supplied by Brouse or equal approved. (No.2)
- Amenity grass mix (EG21) turf (Supplier: EmuGrass seeds or equal approved)
- Proposed street light

To be read in conjunction with the following RPS documents:
 JSL4085-RPS-XX-EX-DR-L-9010 - Plant Schedule + Specification (05)

Rev	Description	By	Ckd	Date
P04	Amendments due to council comments	NG	DB	29.07.22
P03	Revision to play equipment	NG	DB	10.06.22
P02	Revision to play equipment	NG	DB	27.04.22
P01	First Issue	NG	DB	19/11/21



321 Bradford Street,
 Birmingham, B5 6ET
 T: 0121 6228520 E: rpswlv@rpsgroup.com

Client **Persimmon Homes West Midlands**

Project **Hadley Quarry, Telford**

Title **LEAP Detail**

Status **Approval** Scale **1:100 @A1** Date Created **Nov 2021**
 Task Team Manager **JBT** Information Author **NG** Task Information Manager **DB**

Document Number **JSL4085-RPS-XX-EX-DR-L-9012**

RPS Project Number **JSL4085** Suitability **S3** Revision **P04**

rpsgroup.com