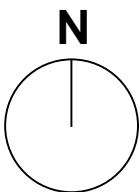


**KEY:**

- Adjacent land under Shropshire Homes control
- Proposed development boundary



B	Redline boundary updated where the road enters the new phase from phase 1.	20.06.22	RF
A	Redline boundary updated to take into account Highways comments.	24/05/22	RF
REVISION		DATE	Rev.By



**SHROPSHIRE HOMES LTD**  
**THE OLD WORKHOUSE**  
**CROSS HOUSES**  
**SHREWSBURY**  
**SHROPSHIRE**  
**SY5 6JH**  
**TELEPHONE: (01743) 761789**

JOB Crudgington Phase 3, Telford, Shropshire		TITLE <u>Location Plan</u>	
DWG No. 185-P-02	DATE NOV 2021	SCALE 1:1250 @ A3	REVISION <b>B</b>
VERSION	DRAWN RF		