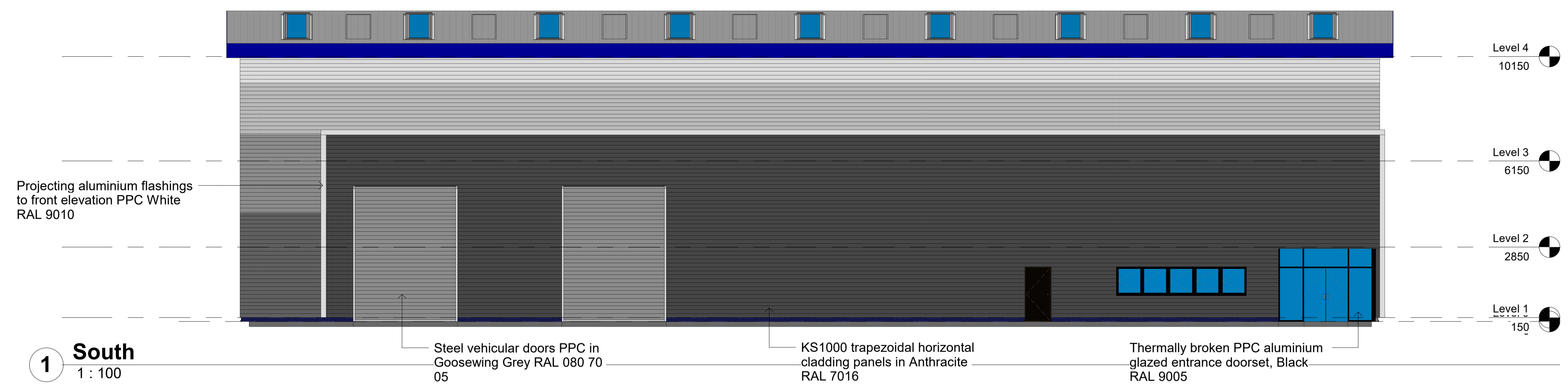


Safety Health and Environmental Information Box
 Construction Risks, Maintenance/cleaning Risks, Demolition/adaptation Risks

Notes:

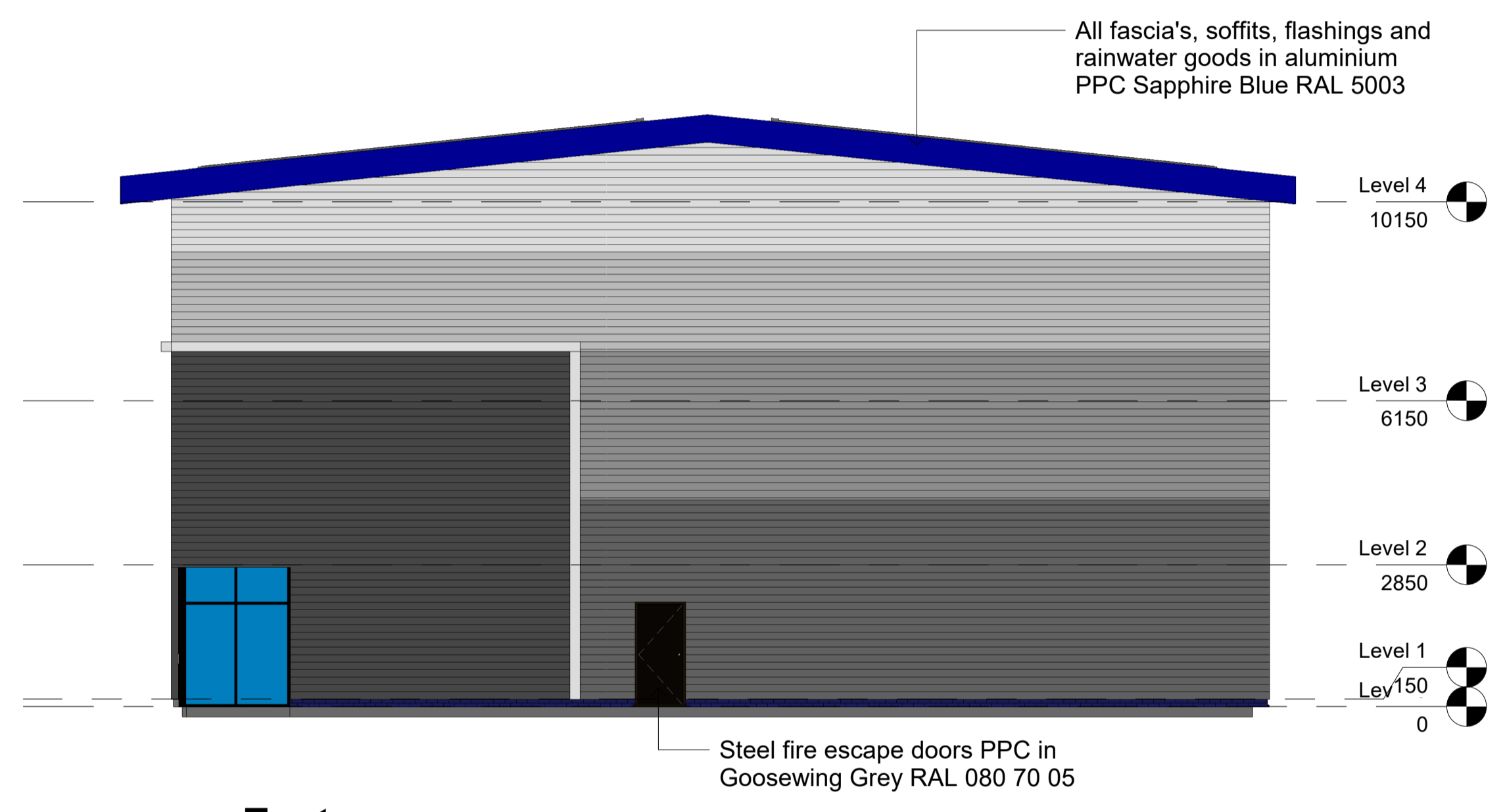


1 South
1 : 100

Steel vehicular doors PPC in Goosewing Grey RAL 080 70 05

KS1000 trapezoidal horizontal cladding panels in Anthracite RAL 7016

Thermally broken PPC aluminium glazed entrance doorset, Black RAL 9005



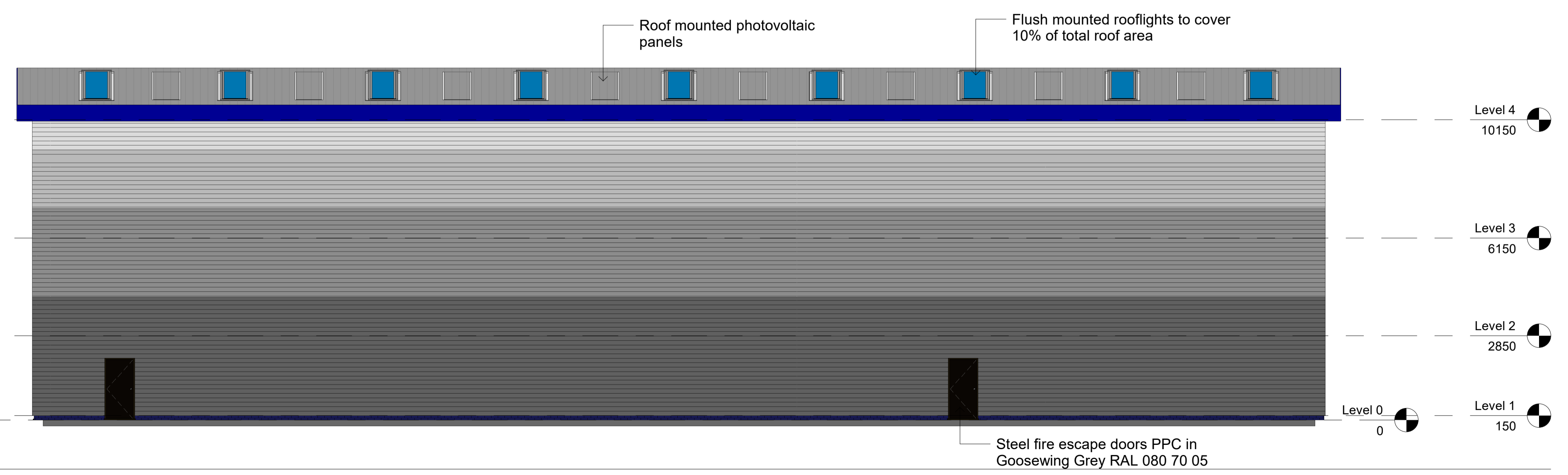
2 East
1 : 100

Steel fire escape doors PPC in Goosewing Grey RAL 080 70 05

KS1000 trapezoidal horizontal cladding panels in White RAL 9010
 KS1000 trapezoidal horizontal cladding panels in Grey White RAL 9002
 KS1000 trapezoidal horizontal cladding panels in Goosewing Grey RAL 080 70 05
 KS1000 trapezoidal horizontal cladding panels in Merlin Grey RAL 180 40 05

4 West
1 : 100

Staffordshire blue low level brick plinth wall



3 North
1 : 100

Steel fire escape doors PPC in Goosewing Grey RAL 080 70 05

Revised / Detail Issued by / Issue Date



bit
 Wellington Civic Offices, Larkin Way, Wellington, Telford,
 Shropshire, TF1 1LX
 T: 01952 384500
 W: www.bit-group.co.uk

Project
 Plot 12 - Hortonwood

Client
 TWC

Layout Title
 Unit 2 - Elevations

Scale @ A1 Status
 1 : 100 Planning

Drawing Number						
project	originator	zone	level	type	role	number
21122						02402