

# Public Document Pack



Telford & Wrekin  
Co-operative Council

Protect, care and invest  
to create a better borough

## Borough of Telford and Wrekin

### Children & Young People Scrutiny Committee

Thursday 30 January 2025

6.00 pm

Council Chamber, Third Floor, Southwater One, Telford, TF3 4JG

---

**Democratic Services:** Paige Starkey 01952 380110

**Media Enquiries:** Corporate Communications 01952 382406

---

**Committee Members:** Councillors J Jones (Chair), S P Burrell, C Chikandamina, P Davis, A R H England, A S Jhawar, L Parker, K Tonks and J Urey  
Co-optees S Fikeis and C Morgan

---

	<b>Agenda</b>	<b>Page</b>
<b>1.0</b>	<b>Apologies for Absence</b>	
<b>2.0</b>	<b>Declarations of Interest</b>	
<b>3.0</b>	<b>Minutes of the Previous Meeting</b>	<b>3 - 8</b>
	To confirm the minutes of the previous meeting held on 7 November 2024.	
<b>4.0</b>	<b>Education Attainment 2023/24</b>	<b>Verbal Report</b>
	To receive a verbal update on Education Attainment statistics for the 2023/24 academic year.	
<b>5.0</b>	<b>Telford &amp; Wrekin Local Safeguarding Children's Board Annual Report 2022/23 &amp; 2023/24</b>	<b>9 - 42</b>
	To receive the annual report of the Telford & Wrekin Local Safeguarding Children's Board for 2022/23 and 2023/24.	

## **6.0 Work Programme**

**43 - 48**

To review the updated Work Programme for the Children & Young People Scrutiny Committee.

## **7.0 Chair's Update**

If you are reading these papers on an electronic device you have saved the Council £15.22 and saved 6.1kg of CO<sub>2</sub>, based on average agenda printing costs for the 2022/23 municipal year.

## **CHILDREN & YOUNG PEOPLE SCRUTINY COMMITTEE**

### **Minutes of a meeting of the Children & Young People Scrutiny Committee held on Thursday 7 November 2024 at 6.00 pm in Council Chamber, Third Floor, Southwater One, Telford, TF3 4JG**

**Present:** Councillors J Jones (Chair), C Chikandamina, P Davis, A R H England, A S Jhawar, K Tonks and J Urey.

Co-optee S Fikeis

**In Attendance:** R Carey (Achievement & Enrichment Service Delivery Manager), D Knibbs (Director: Children's Safeguarding & Family Support), S A W Reynolds (Cabinet Member: Children, Young People, Education, Employment & Skills), P Starkey (Senior Democracy Officer (Scrutiny)), D Thomas-White (Lead Lawyer: Children and Adults), M Tustin (Children's Safeguarding & Family Support Service Delivery Manager) and S Wellman (Director: Education & Skills)

**Apologies:** Councillors S P Burrell and L Parker  
Co-optee C Morgan

#### **CYP29    Declarations of Interest**

None.

#### **CYP30    Minutes of the Previous Meeting**

**RESOLVED** – that the minutes of the meeting held on 17 April 2024 be confirmed and signed by the Chair.

#### **CYP31    Terms of Reference 2024/25**

The Lead Lawyer: Children & Adults presented the draft Children & Young People Scrutiny Committee Terms of Reference for the 2024/2025 municipal year. There was a requirement in the Council's Constitution that an annual review of the terms of reference took place at the first meeting following the Council's Annual General Meeting and that each council Committee had been granted delegated authority to approve their own Terms of Reference. It was noted that there were no proposed changes.

**RESOLVED** – that the Terms of Reference as set out in Appendix A of the report be approved.

#### **CYP32    Children & Young People Scrutiny Committee Work Programme 2024/25**

The Lead Lawyer: Children & Adults presented the draft Children & Young People Scrutiny Committee Work Programme for the 2024/25 municipal year.

A two year work programme was implemented in the preceding year to allow for in-depth work to be completed and the programme presented to Members at the time of the meeting marked the halfway point of the two year programme. Members heard that each scrutiny committee had been granted delegated authority from Scrutiny Management Board to approve their individual work programmes.

**RESOLVED – that the work programme for the 2024/25 municipal year be approved.**

### **CYP33     Ofsted Action Plan**

The Service Delivery Manager: Children’s Safeguarding & Family Support presented a report to the Committee which outlined the findings from the Ofsted inspection of Local Authority Children’s Services (ILACS) which took place between 29 April and 3 May 2024.

Prior to the most recent inspection, the Council’s Children’s Services last received an ILACS inspection in January 2020 whereby the Council were the only local authority in the region to receive an ‘outstanding’ judgement as a result of the inspection. The most recent inspection in 2024 had concluded that the Council’s Children’s Services had maintained its ‘outstanding’ judgement and were 1 of 30 local authorities to receive this judgement out of 151 that had undergone inspection. The Council were also subsequently 1 of 5 local authorities who had maintained its ‘outstanding’ judgement since its last inspection in 2020.

The inspection included four key areas for judgement:-

- Impact of Leaders
- Help & Protection
- Children in Care
- Care Leavers

Areas relating to the impact of leaders on social work practice with children and families, the experiences and progress of children in care and the experiences and progress of care leavers were judged as ‘outstanding’. The experiences and progress of children who need help and protection were judged as ‘good’.

The report identified two areas needing improvement which included the management of contacts within Family Connect and the consistency of making children aged 16 and 17 years old who presented as homeless aware of their rights and entitlements.

Members heard that following the ILACS inspection, the Council would be required to submit an action plan to Ofsted within 70 working days outlining how it had addressed the areas that had been identified as requires improvement. Actions had already been undertaken to address these areas including a review of contacts, introduction of new processes in Family

Connect and the appointment of a Senior Lead to oversee further pathway development for children aged 16 and 17 years old who presented as homeless.

Members welcomed the report and noted the overarching themes as wholly positive and felt that the work of the service had been reflected well in the totality of the Ofsted report and final grading received of outstanding. Following the presentation Members posed the following questions:-

*Given my background in care and experience on foster panels, I understand that the Council was aware of programmes such as Foster Plus and Shared Lives. One child I worked with had special educational needs and transitioned from care to living alone in a flat in London without a support network. When referring to consistency in making 16 and 17 olds who presented as homeless aware of their rights, can the Council confirm if these children were they children from care? If so, when transitioning from care, did the Council ensure ongoing support was available for these children, and was there a support network for them through the VCS?*

The Director: Children's Safeguarding & Family Support offered assurances to Members that the children presented to the Council as being homeless were not children in care. Members were informed that the Council's offer was very comprehensive and that the team had continued to work with housing colleagues to ensure support was provided in terms of accommodation.

*Was there an update on items 7 and 8 of the Ofsted action plan which included developing a range of information platforms for young people which had a due date of 31 October 2024?*

The Director: Children's Safeguarding & Family Support confirmed that meetings had taken place with the Dandelion Group to devise leaflets appropriate for young people. The leaflets were due to be designed by the Council's internal team and would include the use of QR codes.

*Did the Council recognise and identify young people who need additional support to either stay or get into higher education and does the Council have an approach to address this?*

The Director: Education & Skills confirmed that the Council have a dedicated Virtual School team and undertake strong governance and monitoring for children in care. Members were also informed that the Council continues to acknowledge the additional support that is required for some children and had been working with schools in order to recognise these needs.

The contents of the report and action plan was noted.

#### **CYP34 School Attendance**

The Director: Education & Skills and the Service Delivery Manager: Achievement & Enrichment presented a verbal update to Committee on

school attendance during the last academic year and the Council's response to improving school attendance across the Borough.

Nationally, there had been a focus on children's attendance at schools following concerns from the Children's Commissioner for England that a fifth of children are regularly absent from school. Data showed that 19.2% of pupils in England had been recorded as persistently absent from school in the Autumn and Spring terms of the 2023/24 academic year.

Further data presented to the Committee showed that the West Midlands had an overall absenteeism rate of 6.9%. In the last year, 18.1% of pupils had been recorded as persistently absent and 2% of pupils had been recorded as severely absent in schools in Telford and Wrekin with an overall absence of 6.4%. At the time of the meeting, Telford and Wrekin schools were below regional average for severely absent pupils and the average for persistently absent pupils had decreased.

National figures for the 2023/24 academic year indicated that primary schools had a 94.5% attendance rate and 90.9% attendance rate for secondary schools. Telford and Wrekin schools attendance rate had been recorded as slightly higher than the national average.

In August 2024, the Department for Education (DfE) published updated statutory guidance on working together to improve school attendance to help schools, trusts, governing bodies and local authorities maintain high levels of school attendance and improve consistency of support. Members were informed that the updated guidance outlines the roles and responsibility of schools, academy trusts, governing bodies and local authorities in maintaining high levels of attendance in schools with an emphasis on building strong relationships with families, understanding and addressing barriers to attendance and promoting a whole-school culture that values high attendance.

As part of the updated guidance, schools are encouraged to undertake accurate record keeping and regular data analysis to help identify patterns of absenteeism and support families to overcome barriers of non-attendance including supporting pupils who may be struggling with mental or physical health issues and those identified with special educational needs.

The Council had continued to work collaboratively with schools and academies in the Borough to improve school attendance through the following practices:-

- Reviewing and analysing weekly attendance data collected using a newly introduced DfE attendance collection system (IDAMS);
- Appointing attendance advisors to carry out termly attendance support meetings with all schools and academies;
- Providing and facilitating termly briefings and surgeries for schools and academies; and
- Auditing and sharing early help practices and undertaking signposting in schools to support attendance of pupils.

Following the presentation, Members posed the following questions:-

*Did the figures include instances where children were excluded by schools for reasons such as wearing the wrong shoes or other policy violations, or were these cases recorded separately?*

The Service Delivery Manager: Achievement & Enrichment confirmed that attendance figures included any pupil who had missed lessons, including those excluded for uniform violations. Previously, pupils may have been sent home for not wearing the correct uniform, but under the new guidance, schools were now encouraged to find alternatives to exclusion such as keeping a surplus of uniforms to provide for children in need. Members were also advised that the Council had promoted a pre-loved uniform scheme to help foster a school culture that supports sharing uniforms ethically. This approach had aimed to shift behaviours away from shaming and would allow parents to seek assistance with travel or uniforms.

*Given my background in school attendance and data analysis for 700 schools across the UK, I have noticed issues with national statistics. The data is collected from AM and PM sessions, with AM data taken up to 15 minutes into the morning tutor period. In some local authorities, if a child is late within 5 minutes, they receive a U code and are marked absent for the whole morning. There is often a discrepancy between lesson attendance data and statistical data. Was the Council or the government planning to set a standardised time before the U code is used to ensure fairness across schools, and will lesson attendance be analysed correctly to provide accurate attendance data?*

The Service Delivery Manager: Achievement & Enrichment confirmed that as a local authority governed by statutory guidance, there had been a significant change around attendance codes. The Council had recently conducted additional term briefings for schools following the implementation of new attendance codes to ensure that one school was not interpreting them differently from another. Members heard that whilst the system may not be perfect, one of the key pieces of work during termly attendance visits had been to use these visits as a basis for starting discussions with schools.

*Mental Health services had long waiting lists with assessments for children taking up to 3 months. There was no statutory requirement for schools to have a school counsellor. What had been done to help reduce waiting times and enable children with mental health needs access to schools?*

The Director: Education & Skills reassured the Committee that the Council had recognised that children's mental health support in schools was a national issue and advised that the Council were currently awaiting the introduction of the new Mental Health bill from Local Government.

*Was the 10 by 10 initiative having a positive impact on school attendance?*

The Service Delivery Manager: Achievement & Enrichment advised that schools in the Borough had been very committed to the 10 by 10 initiative.

Schools had been regularly asked to look at proportional representative to identify which pupils were accessing the activities on offer. Members heard that the Council had undertaken several projects around attendance including supporting pupils at risk of persistent absence by offering further sessions around music and sports. Schools regularly assess activities to ensure they are focused on topics pupils enjoy.

*What were the Council doing to educate parents on the importance of children attending school?*

The Service Delivery Manager: Achievement & Enrichment advised that often parents make the decision not to take their child to school. The Council's early help offer is key in understanding families and recognising what barriers exist. Members were informed that a recent Early Help conference found that language barriers could have occasionally prevented children from accessing services in school and recognising this has allowed a more coordinated approach for schools to signpost parents to resources such as Live Well Telford. Members also heard that many school offices have telephones that parents can use to call services when needed and Pastoral Support teams were able to assist with day-to-day life, not just school-related issues.

Members noted the presentation.

**CYP35    Chair's Update**

None.

The meeting ended at 19.14 pm

**Chairman:** .....

**Date:**            Thursday 30 January 2025



Page 9

# Safeguarding Children Board Annual Report

**April 2022 - March 2023**



Agenda Item 5

# Contents

<b>Introduction from the Chair</b>	<b>3</b>
<b>Who is the Telford &amp; Wrekin Safeguarding Children Board and what does it do?</b>	<b>4</b>
<b>Telford and Wrekin – the place</b>	<b>6</b>
<b>What have we achieved in the last 12 months?</b>	<b>7</b>
<b>Partnership review</b>	<b>14</b>
<b>A heartfelt thank you to...</b>	<b>14</b>

# Introduction from the Chair

**Telford and Wrekin Safeguarding Children Board is determined to ensure that people, rather than policies or processes remain at the heart of our work to safeguard and protect vulnerable children and adults.**

In July 2022, the Independent Inquiry into Telford Child Sexual Exploitation (CSE) was published which made 47 recommendations to improve the way in which those at risk, and victims, of CSE are safeguarded, supported and heard. The board and its partners have unanimously adopted these recommendations and the implementation of them is a major focus of work for each of them. Most importantly, at the heart of this work are the voices of three people with lived experience of CSE who are being consulted on how each of the recommendations are implemented. It is our aim that the 47 recommendations will be implemented by December 2023.

Child neglect is one of the most common reasons as to why families receive statutory safeguarding service intervention. The board this year has chosen to undertake a fundamental review of how services respond to the issue of neglect. In doing so, the voices of children and their families who have lived experience of statutory social services are informing this work. Their experiences will ensure that the support that is provided to them is focussed on supporting them to address the challenges in their lives and improve the outcomes for their children and family.

Together we hold each other to account and build learning through identifying best practice and areas which need improvement to improve the quality of life for residents within Telford and Wrekin and to ensure they remain free from harm.

In writing this year's annual report, we have continued to develop a more succinct and meaningful report that is better focused on the impact of the work of the board has on residents and agencies.

I would like to take this opportunity to thank the huge number of professionals who continue to work tirelessly in Telford and Wrekin to make it a safer place for our children and young people.



**Andrew Mason**  
**Independent Chair of Telford and Wrekin Safeguarding Children Board**

# Who is the Telford & Wrekin Safeguarding Children Board and what does it do?

Telford & Wrekin Council, West Mercia Police and Shropshire, Telford & Wrekin ICS have a statutory duty to put in place multi-agency safeguarding arrangements to protect and safeguarding vulnerable children. This responsibility is driven by the Telford and Wrekin Safeguarding Children Board which is funded, equally, by the three partners.



Page 12

Membership of the board is drawn from:

- Shropshire Community Health NHS Trust
- CAFCASS
- Shrewsbury and Telford NHS Hospital Trust
- West Mercia Youth Justice Team
- Midlands Partnership NHS Foundation Trust
- West Mercia National Probation Service
- Education and Skills
- West Midlands Ambulance Service
- GP

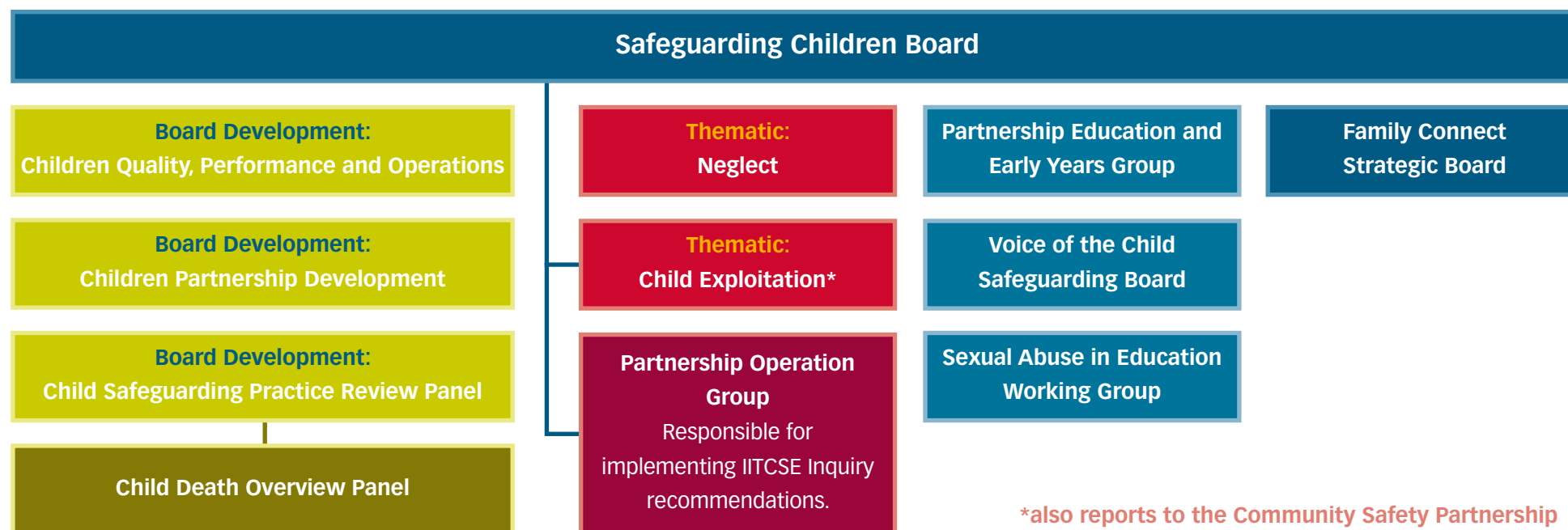
The board has agreed its core focus as:

- Put the person who has been harmed or at risk at the centre of everything that we do and listen to their views about what we can do to improve the safety of people;
- Hold members to account – are we/they doing enough to keep people safe;
- Collect and share information about how well we are keeping people safe and what more we could do;
- Make sure our workers and volunteers get the training they need to provide safe services and share concerns if they think a person is being hurt or abused;
- Review our policies and guidance to make sure we are constantly improving; and
- Raise awareness of safeguarding issues and what to do.

How the board does things is as important as what it does. To shape how it delivers its role, the board has adopted the following principles and values:

- **Empowerment** – presumption of person led decisions and informed consent;
- **Prevention** – it’s better to take action before harm occurs;
- **Proportionality** – proportionate and least intrusive response appropriate to the risk presented;
- **Protection** – support and representation for those in greatest need;
- **Partnership** – local solutions through services working with their communities. Communities have a part to play in preventing, detecting and reporting abuse and neglect; and
- **Accountability** – accountability and transparency in delivering safeguarding.

The board is chaired by an Independent Chair appointed by the three statutory partners with the objective of providing independent challenge and scrutiny. As part of our arrangements for external challenge, the Chair presents the board’s annual report to the Council’s Scrutiny Board for Children and Families and the Council’s Health & Wellbeing Board. To drive delivery of its objectives, the board has a series of sub-groups as set out below:



## Telford and Wrekin – the place

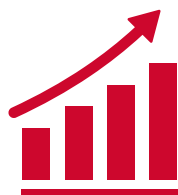
The borough which the board serves is a place of contrasts. Central to the borough is the New Town of Telford which was commissioned in 1968 and grew rapidly around existing communities including Wellington, Oakengates, Dawley and Madeley. Along the banks of the River Severn is Ironbridge, the birthplace of the industrial revolution and now a World Heritage site. Surrounding Telford is a rural hinterland – accounting for more than two thirds of the borough’s area.

The 2021 Census estimated the population of the borough to be 185,842 people. A quarter (45,504 people) are aged 0 to 19. From the 2011 to 2021 Census, the borough’s overall population increased by 19,000 people – an increase of 11% - making it the fastest growing area in the West Midlands. Many people who have come to live in the borough have been attracted by the value for money housing offer, our schools, outstanding natural environment, growing economy and our connectivity via road and rail into the West Midlands conurbation and beyond.

Page 14



**185,842**  
**POPULATION**



**11%**  
**POPULATION INCREASE**  
**FROM 2011 TO 2021**



**45,504**  
**PEOPLE (A QUARTER)**  
**ARE AGED 0 TO 19**

Whilst at face value the borough is prosperous and thriving, the Index of Multiple Deprivation shows that there are 18 neighbour areas in the Borough which are ranked amongst the 10% most deprived in England. This impacts on the life experience of these residents in terms of poorer outcomes with regards to health, education employment and housing. Just over 1 in 5 children (21.4%) aged 0 to 15 live in a household that is affected by income deprivation – the England average is 18.5%. Such challenges have undoubtedly increased because of the current cost of living crisis.

“The Social Gradient in English Child Welfare Services”, a study by Kingston University academics and Ofsted analysts, said that children from the poorest neighbourhoods in England were almost fourteen times more likely to be referred to social care services than those from the richest areas. This impact can be seen on the demand for support from children social care across the borough:

- 257 children on a child protection plan with a rate of per 10,000 population of 50.4 (March 2022) compared to the England rate of 42.1.
- 449 looked after children with a rate of per 10,000 population of 102 (March 2022) compared to the England rate of 70.
- Over a thousand contacts for support each month.

# What have we achieved in the last 12 months?

An essential objective of this report is to demonstrate the impact of the board and the multi-agency safeguarding arrangements that it has put in place. The following part of the report takes a month by month look at the activity of the board and the safeguarding impact that this has had.



Rapid Reviews and Childrens Safeguarding Practice Reviews which had been carried out during the previous year identified that non-accidental injuries in babies and children under the age of two was a key area of learning for professionals across Telford and Wrekin. In response, the Partnership organised a **Non-Accidental Injury Learning Event** which was attended by over 100 professionals from across all partners to focus on key issues including process, findings from the National Panel, emerging local themes and to reinforce consistent professional curiosity.

**Safeguarding impact:** Professionals are better equipped to identify those children at greater risk and intervene at a much earlier stage to safeguard against non-accidental injuries.



May saw the first **thematic review**, as a joint CSPR, undertaken into cases of neglect that had been referred to the Partnership. An independent reviewer was tasked with examining two separate cases involving child neglect to identify learning and enhance practice. This Review was completed and signed off by the board in June 2023.

**Safeguarding impact:** Reviews of this type are vital to ensure that safeguarding practice within Telford and Wrekin is continually evolving to enhance protections in place for children alongside support for their parents/carers. The review recommendations are informing the work of the Neglect sub-group into its review of policies and procedures to support relevant families.



The Partnership Development sub group (who meet quarterly to consider matters relating to multi-agency learning, policy development and the communication of key information across the partnership) had their first meeting of the new financial year which focussed on developing a robust multi-agency training offer which trialled a pilot of offering a selection of 19 courses related to safeguarding and associated topics, for up to 300 people from across the partner agencies. Topics included:

- Non accidental Injury Conference
- The importance of robust recording within casework (and top tips!)
- Threshold of Need Conference and monthly workshops
- Child Protection - An Introduction
- Child Sexual Exploitation (CSE) Awareness
- Cyber Security
- Female Genital Mutilation (FGM)
- Neglect
- Physical Abuse (Children)
- Domestic Abuse Awareness
- E-Safety Awareness

Feedback from these learning and development opportunities are monitored and to ensure that the training programme is of an appropriate quality and meeting need.

*"I wanted to say a big thank you for running this training session. I found it invaluable. I've shared your email [containing resources from the session and future dates] and encouraged attendance at your next training session. I really look forward to future sessions"*

*"I really enjoyed the sessions and will certainly be using some of the statistics in updating our training packages over the Summer."*

*"I found the session really informative and useful"*

*"I really enjoyed the couple of hours of learning... I also think that the recording of the event to allow sharing is a great idea for those that were unable to attend..."*

The group also developed and published a [Best Practice Guidance for Professional Curiosity](#) which was shared with partners in February 2023.

**Safeguarding Impact:** the work of the Partnership Development group ensures that learning is disseminated across the partnership and reaches into all organisations to provide a consistent approach and knowledge base when undertaking their safeguarding duties.



The [Independent Inquiry – Telford Child Sexual Exploitation](#) (IITCSE) published its report making 47 Recommendations for the board and the three statutory partners together with the West Mercia Police and Crime Commissioner to implement. Partners unconditionally accepted all 47 of the recommendations. Later in the month, statutory partners met to agree governance arrangements for implementing the Inquiry recommendations which included an Independent Chair to oversee implementation. Most importantly, it was agreed that three Independent Lived Experience Consultants would inform the development of the response to the recommendations by the statutory partners to ensure that real change was embedded in the work of the board. A clear goal was adopted to implement the Recommendations by December 2023. Throughout the year, partners continued to work to implement the report recommendations through the Partner Operations Group – a task and finish group specifically established for this task.

**Safeguarding impact:** implementation of the IITCSE recommendations will enhance the way in which cases of CSE within the borough are addressed and how victims, survivors and their families are supported.



Work took place within the Quality, Performance and Operations sub-group to run a mock **Joint Targeted Area Inspection** (JTAI). This allowed partners to evaluate their services provided to vulnerable children and young people and address any areas requiring action.

**Safeguarding impact:** A proactive approach to undertaking our own JTAI ahead of any inspection by Ofsted, Care Quality Commission (CQC), Her Majesty's Inspectorate of Constabulary (HMIC) and Her Majesty's Inspectorate of Probation (HMIP) has allowed for early learning around how the local authority, police, health, probation and youth offending services are working together to identify, support and protect vulnerable children and young people.



Although the work of the **Child Safeguarding Practice Review Panel** (who meet monthly) takes place throughout the year September saw a peak in referrals being made to the Partnership requiring a Rapid Review. During April 2022 to March 2023 the Panel reviewed four cases that had been referred to the Partnership, one of which progressed to a Child Safeguarding Practice Review (CSPR). In addition to this, the Panel continued to progress six open CSPR cases, of which four were completed in year.

The following themes have been highlighted in the reviews undertaken this year and have resulted in some targeted work:



### **Neglect**

Neglect has been a theme for a number of years and, as mentioned above, work has been commissioned to explore how we can better support families in making lasting change and break the cycle of repeated generational patterns of behaviour.

### **Geographical relocation of the family**

Multiple reviews have highlighted difficulties for agencies when families move between different local authority areas, in response the CSPR Panel has written to the National Panel requesting that this issue be considered within their work plan for a national review to address this concern.

### **Professional Curiosity, Record Keeping and Information Sharing**

These themes have been addressed through the monthly 'Threshold of Need' workshop sessions which have been open to all professionals from across all agencies. They focus on how partners work together, share information and ensure that children and their families remain our main focus and provide effective support at the earliest opportunity. Taking a partnership approach from the earliest opportunity should mean that fewer children in Telford and Wrekin experience serious harm or neglect.

**Safeguarding impact:** All identified recommendations from reviews are implemented through changes to processes, focussed assurances and evidence being gathered from across the partnership and a variety of learning offers made to include the use of short '7 minute learning briefings', online seminars or wider conferences (like the Non accidental Learning event described earlier) all with the aim of aiding practitioner awareness, understanding and confidence across a variety of safeguarding topics.



The **Voice of the Child** is crucial to the focus of the Telford and Wrekin Safeguarding Children Board and as such work was started to explore how it can become more integrated into board meetings over and above the representative attending. New [training resources](#) have been incorporated into the training offer from the partnership and are primarily focussed at school aged children addressing areas they have raised as worrying them.

**Safeguarding impact:** Closer links between agencies and the children, young people and families they work with embraces true partnership working to fully understand and respond to issues as they arise within the borough. This creates a safeguarding culture which strives for improvement through cooperation rather than enforcement. Constantly evolving training ensures professionals are equipped to respond to an ever changing society and new risks.



The Quality, Performance and Operations sub group met and organised a **Multi-Agency Case File Audit (MACFA)** to be carried out which would review three cases where young people had multiple presentations to A&E in mental health crisis and Section 136s<sup>1</sup> were issued, prior to being admitted to adult mental health wards. The MACFA was completed and reported to board in March 2023 making a series of recommendations to improve the support provided to children and young people.

The group was also instrumental in leading work to develop a **multi-agency Performance Framework**, and data collection activity undertaken against performance indicators to enable agencies to make intelligence led decisions and focus resources in areas that are emerging as potential issues.

In preparation for the spring 2023 biennial Section 11 audit, implemented a new online platform which will operate across multi-regional areas to improve the quality of the audit process and the tracking of actions to improve outcomes.

**Safeguarding impact:** The proactive use of MACFA's allows partners to jointly assess performance, highlight areas of good practice alongside identifying areas which need more robust work to be undertaken. This assessment of services allows room for professional challenge across partners to ensure the residents of Telford and Wrekin remain the focus of safeguarding work.

<sup>1</sup> Section 136 is part of the Mental Health Act that gives police emergency powers. Police can use these powers if they think you have a mental disorder, you're in a public place and need immediate help.



Discussions started to take place with partners around the production of a refreshed **Child Exploitation Strategy** to further address the recommendations in the **IITCSE** report. This work has been led by the Child Exploitation sub group and continues into the new financial year. All statutory partners, young people and families (both of lived experience of exploitation and from the wider society) are involved in developing and shaping the strategy.

**Safeguarding impact:** The final strategy will formalise a borough wide offer to tackle and support all known forms of child exploitation, underpinned by formal contextual safeguarding<sup>2</sup> principles. It will focus on four key areas, 'Understand and Identify', 'Prevention, Intervene and Support' and 'Disrupt and Bring to Justice'. It is anticipated that the strategy will be formally launched in the later part of 2023.



The start of the new year saw the start of work focussing on **neglect** within Telford and Wrekin following emerging learning from the thematic review started in May. An independent reviewer has now been tasked with reviewing how we work with families from the point of referral all the way through to Child Protection conferences. The reviewer will be engaging across all partners and at all levels to include front line practitioners for example, Independent Review Officers, Social Workers, Health colleagues. There will also be key participation from families with lived experience through the Dandelion Group to offer crucial insight into how the words we use and changes to documents would have aided the safeguarding process from their perspective.

**Safeguarding impact:** This all-encompassing piece of work is hoped to result in a change in approach and practice across all partners to move to a place where we see parents as partners in working toward a solution to improve outcomes for children. We aim to support, educate and motivate families towards lasting positive changes rather than demoralising and blaming them.

<sup>2</sup> 'Contextual safeguarding' is a theory developed by Dr Carlene Firmin of the University of Bedfordshire, which supports an approach to understanding and responding to children's experiences of significant harm beyond their families. It is recognised that the different relationships children form in their neighbourhoods, schools and online can feature violence and abuse.



February saw the launch of the [new Domestic Abuse Strategy](#) following extensive consultation with partners and survivor groups who actively shaped the strategy and commissioning process for the new service. Telford & Wrekin Council were also the first local authority in the UK to sign the Child to Parent Abuse Covenant, which has been developed by a social enterprise known as Parental Education Growth Support. Recognising Child to Parent Abuse has also been incorporated into the new Domestic Abuse Strategy. The NSPCC Harmful Sexual Behaviour audit was also commenced in this month with findings due in autumn 2023. The audit considers the multi-agency partnership response to harmful sexual behaviour within Telford and Wrekin.

**Safeguarding impact:** The new strategy commits to hearing and taking on board the voices and expertise of people who have experienced domestic abuse through the forum to ensure services meet the needs of those experiencing domestic abuse, whether young or old, parent or child.



Work to continue to raise awareness of the warning signs and impact of Child Sexual Exploitation (CSE), took place within the Partnership. A **CSE Awareness Day** event was organised with the Holly Project – a free, independent support service for the survivors of Child Sexual Exploitation (CSE) and their families, run by those with lived experience of CSE which saw attendance by over 60 professionals across all partners.

March also saw the launch of a revised [Threshold of Need guidance](#), developed by the Family Connect Strategic Board, which provided professionals with an increased awareness, confidence and skills in using the Partnership Threshold of Need. Professionals were reminded of the support available to children, young people and families within Telford and Wrekin with an emphasis being placed on contextual safeguarding and considering risks outside of the home.

**Safeguarding impact:** Greater clarity around the threshold of need among practitioners means that the partnership is able provide the right help, at the right time.

## Partnership review

As part of the process of ongoing review to ensure that local multiagency safeguarding arrangements are robust and effective, a review of safeguarding arrangements was commissioned in January 2023 – this work was driven by the IITCSE Recommendations and ongoing policy development by Government. The review was to report in May 2023.

## A heartfelt thank you to...

All the individuals and families who have taken the brave step to share their experiences and worked with us in pushing for change. The 100's of professionals up and down the borough who have continued to support the partnership, their colleagues and the residents of Telford and Wrekin.





Page 23

# Safeguarding Children Board Annual Report

**April 2023 - March 2024**



# Contents

Introduction from the Chair	3
Who is the Telford & Wrekin Safeguarding Children Board and what does it do?	4
Telford and Wrekin – the place	7
Current priorities and impact	9
Consultation around new priorities in 2024-2025	14
Child Safeguarding Practice Review Panel	14
Quality Performance and Development	15
Training and development	16
Our future focus	17
A heartfelt thank you to...	17

# Introduction from the Chair

**The Telford and Wrekin Safeguarding Children Board is a fundamental part of how our communities, and all the agencies within it, help and protect our children and young people.**

The partnership is led by the NHS Shropshire, Telford and Wrekin Integrated Care Board, Telford & Wrekin Council, and West Mercia Police, and it becomes truly effective when it involves all the other partner organisations who help safeguard our children and young people. These include our local schools and colleges, nurseries and pre-schools, all of those who work in the NHS, local charities and community groups, and probation staff.

As a partnership we keep children, and their families, at the centre of all that we do. We seek to provide help as early as we can, and work with children and families, building on their strengths. We understand the pressures families face across Telford and Wrekin so, as a partnership, try to help with those. We know if we help with the underlying difficulties, families can often solve things for themselves.

The Board is in a healthy position with a strong, positive commitment from our local partner organisations, and an energetic and dedicated workforce. Progress has been made against our 2023/34 priorities. Our responses to Neglect and Child Exploitation are much improved, with further improvement work being undertaken. Recent reviews and inspections have recognised the level of improvement, and the difference being made to children and their families.

The help available to families through our new local Family Hubs, has improved too. Particularly in respect of families with children at the start of their lives, the amount and range of help has increased. Many more families are receiving help earlier, in locations close to their homes and from people they trust. We hope to build on these improvements during 2024/25.

The Board has worked to reduce the number of children being taken in care, with the intention of keeping more children with their families. The results have been encouraging over the last twelve months, with less children having to leave their families. Additionally, we are part of a national pilot scheme and will be able to further improve how we work.



We have seen also, a reduction in the number of children and families involved in child protection procedures, the most complex and worrying part of what we do. We are confident this is an accurate reflection of the Board getting things right. It shows we are helping earlier, and helping families put in place long-term solutions to their problems.

As a Board we are at an exciting, yet busy, period. **Working Together to Safeguard Children**, the national guidance that shapes how we work, was updated and published in December 2023. It has given us the opportunity to further develop our partnership, in line with direction and guidance from the Government. It will allow us to build on the strengths the partnership has already. As we have worked through 2023/24, we have been able to shape the way ahead and our plans will mature during 2024/25.

It has been a busy, challenging year with all our partners organisations reporting families facing increased pressures, whether that be financially, through anxiety or because of trauma. Our Board, through effective partnership working has been able to provide help and support to many, many of those families and this has made a huge difference to their lives.

Page 26  
*John*

**John Clements**  
**Independent Chair of Telford and Wrekin Safeguarding Children Board**

# Who is the Telford & Wrekin Safeguarding Children Board and what does it do?

Telford & Wrekin Council, West Mercia Police and Shropshire, Telford & Wrekin ICS have a statutory duty to put in place multi-agency safeguarding arrangements to protect and safeguarding vulnerable children. This responsibility is driven by the Telford and Wrekin Safeguarding Children Board which is funded, equally, by the three partners.

Membership of the Board is drawn from:

- Independent Safeguarding Children Board Chair
- Telford & Wrekin Council, Children Services
- NHS Shropshire, Telford and Wrekin Integrated Care Systems (ICS)
- West Mercia Police
- Telford & Wrekin Council, Education and Skills
- Voice of the Child Representative, Project Manager and School Improvement Adviser/ITT Lead
- Telford & Wrekin Council Policy & Governance Service Delivery Manager,
- Telford & Wrekin Council Safeguarding Children Board Legal Advisor, Solicitor, Team Leader People,
- West Mercia Youth Offending Team
- Telford and Wrekin Partnership Safeguarding Children Board Manager.

The Board has agreed its core focus as:

- Put the person who has been harmed or at risk at the centre of everything we do and listen to their views about what we can do to improve the safety of people;
- Hold members to account – are we/they doing enough to keep people safe;
- Collect and share information about how well we are keeping people safe and what more we could do;
- Make sure our workers and volunteers get the training they need to provide safe services and share concerns if they think a person is being hurt or abused;
- Review our policies and guidance to make sure we are constantly improving; and
- Raise awareness of safeguarding issues and what to do.

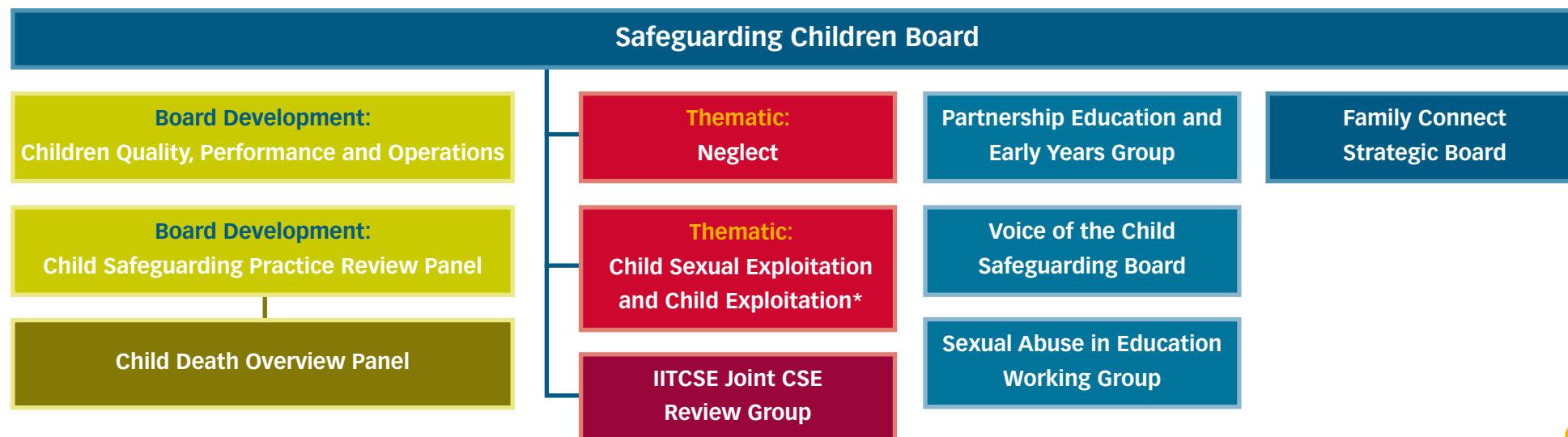


**How the Board does things is as important as what it does. To shape how it delivers its role, the board has adopted the following principles and values:**

- **Empowerment** – people being supported and encouraged to make their own decisions and give informed consent;
- **Prevention** – it’s better to take action before harm occurs;
- **Proportionality** – the least intrusive response appropriate to the risk presented;
- **Protection** – support and representation for those in greatest need;
- **Partnership** – working with communities who have a part to play in preventing, detecting and reporting abuse and neglect; and
- **Accountability** – accountability and transparency in safeguarding practice.

Working Together (WTG) 2023 states that one of the three statutory members is required to chair the Board. To support the transition of chair arrangements, Telford and Wrekin Partnership has retained an Independent Chair throughout the WTG2023 transition period. This decision was made to provide independent challenge and scrutiny as well as to support the development and implementation of the new arrangements which will be published in line with the statutory guidance in December 2024. It has been agreed that post December 2024, the Board will move to a model of independent scrutiny and the Board chaired by Telford & Wrekin Council’s Director of Children’s Services.

The current Chair will present this annual report to the Telford & Wrekin Council’s Scrutiny Board for Children and Families and to the Health & Wellbeing Board. To drive delivery of its objectives, the Board has a series of sub-groups as set out below:



## Telford and Wrekin – the place

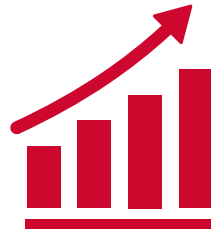
The Borough which the Board serves is a place of contrasts. Central to the borough is the New Town of Telford which was commissioned in 1968 and grew rapidly around existing communities including Wellington, Oakengates, Dawley and Madeley. Along the banks of the River Severn is Ironbridge, the birthplace of the industrial revolution and now a World Heritage site. Surrounding Telford is a rural hinterland – accounting for more than two thirds of the borough’s area.

The estimated the population of the borough to be 191,915 (Mid 2023). A quarter (47,600) are aged 0-19. Between 2013 and 2023 the borough’s population increased by 22,900 people - an increase of 13.5% - making it the fastest growing area in the West Midlands. As the population grows it is becoming more diverse and ageing, between 2013 and 2023, the number of people aged 65+ grew by 28.5% which is twice the regional rate of 14.3%.

Page 29



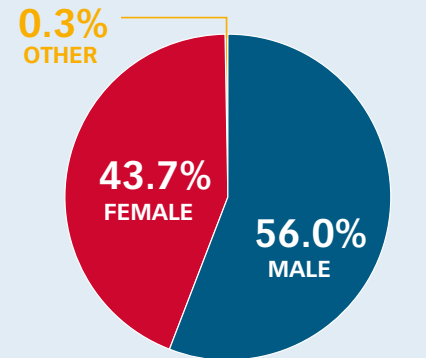
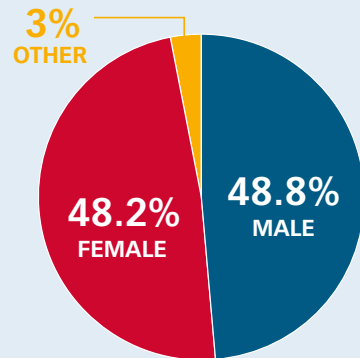
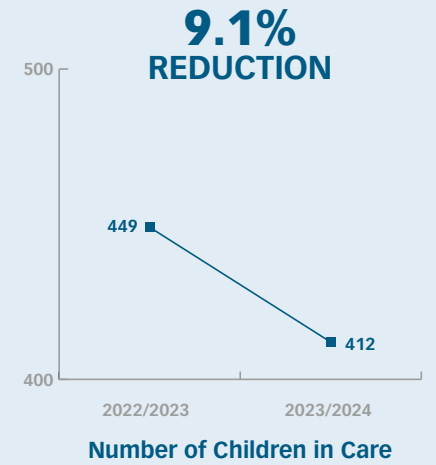
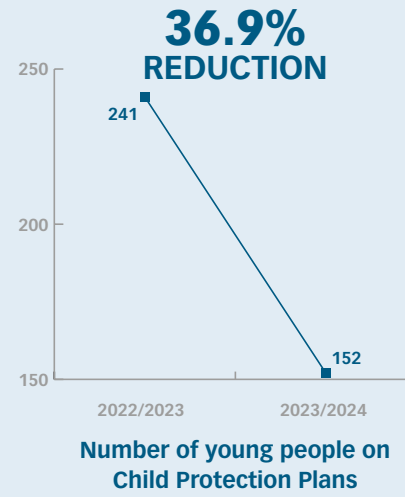
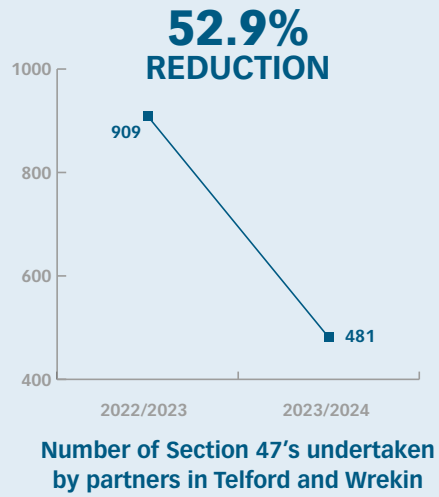
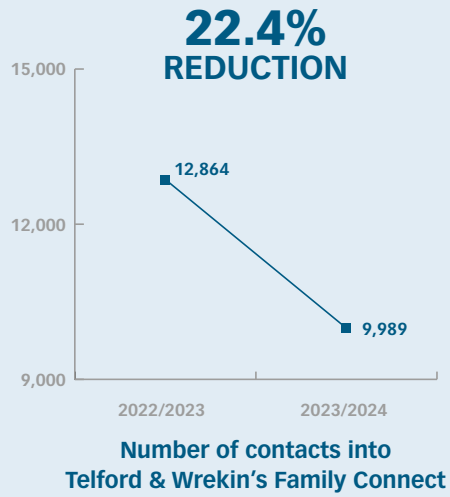
**191,915**  
**POPULATION**



**13.5%**  
**POPULATION INCREASE**  
**FROM 2013 TO 2023**

Many people who have come to live in the borough have been attracted by the value for money housing offer, our schools, outstanding natural environment, growing economy and our connectivity via road and rail into the West Midlands conurbation and beyond.

Whilst at face value the borough is prosperous and thriving, the Index of Multiple Deprivation shows that there are 18 neighbour areas in the Borough which are ranked amongst the 10% most deprived in England. This impacts on the life experience of these residents in terms of poorer outcomes with regards to health, education employment and housing, such challenges have undoubtedly increased because of the current cost of living crisis.



# Current priorities and impact

The Board has two specific priority areas where it recognised there was a need to improve policy and practice to shape better outcomes for children and young people: “neglect” and “child exploitation”.

The key focus of the neglect thematic sub-group is to implement child centred practice that supports a family to make the necessary step changes to meet for the specific needs of a child. Core to this is addressing underlying challenges in a family that resulted in neglect.

The key activities and the impact of them are set out below:

Priority – Neglect	
Partnership work undertaken	Impact
<ul style="list-style-type: none"> <li>• Consultation with Partners, Families and Children to review practice and engagement with families from Family Connect referral, to S47 right through to the Initial Child Protection Conference. (Professor Jan Horwath)</li> <li>• Development of a Neglect windscreen to form part of the Partnerships Threshold guidance. This is to inform professionals of the services which can support families with a specific focus on Neglect.</li> <li>• Clear focus on the number (and trends) in Neglect referrals throughout all statutory services. This has enables data drive decisions and interventions to be implemented.</li> <li>• Multi Agency Case File Audit with a focus on “Neglect” Child in Need cases. To provide assurance to the Board of ingrained practice and identify any gaps in learning.</li> <li>• Further development of Family Safeguarding Model within Children Social Care.</li> <li>• Roll out of six “Family Hubs” across Telford who form part of the Family Hubs network delivering Start for Life Services. These span across strands of parenting, perinatal mental health, infant feeding, home learning environment.</li> <li>• Services on offer are promoted through the Family Hub Offer booklet and Start for Life Offer which is provided at birth registration.</li> </ul>	<p>Child &amp; Family Assessment with neglect as a factor reduced by 35%* (C&amp;F 2022-23 &amp; 2023-24)</p> <p>A reduction of 16.5%** in contacts into Family Connect with “Neglect” as a contributory factor (**Contact into Children Social Care Family connect 2022-23 &amp; 2023-24)</p>

The key focus of the child sexual exploitation and child exploitation thematic sub-group is to address any strategic barriers to achieving this purpose whilst recognising that children and young people are vulnerable to exploitation in a range of social contexts by applying the principle of contextual safeguarding to help respond to and prevent child exploitation.

The key activities and the impact of them are set out below:

Priority – Child Sexual Exploitation & Child Exploitation	
Partnership work undertaken	Impact
<ul style="list-style-type: none"> <li>Development of the Child Sexual Exploitation and Child Exploitation Group multi agency data set. The data enables the Thematic group to analyse trends and emerging needs. Services, support and engagement can then be tailored to the local need. All information is reported to Board for oversight and to provide assurance.</li> <li>Development of the Child Exploitation contextual safeguarding model</li> <li>Missing and return home data analysis to ensure that all young people receive a Return Home Interview with 72 hours of being found, by an independent person with a understanding of child Exploitation Triggers and Push Pull Factors. Additional scrutiny that Missing Intervention Meetings are held when required and encompass a full multi agency response.</li> </ul>	<p><b><i>“When concerns about children involve risk of exploitation, they are screened promptly. Consultation offered by the Children Abused Through Exploitation (CATE) team provides additional advice to inform analysis.”</i></b> Ofsted Inspection of Telford and Wrekin local authority children’s services April-May 2024 (Overall Rating “Outstanding”)</p> <p><b><i>“When children go missing from home or from care, they are offered timely return home interviews. There is effective engagement of children by the specialist CATE team in this process, which enables them to explore the push-and-pull factors for children. Through detailed direct work, social workers explore children’s feelings about where they want to live. For some children, this has resulted in them moving and incidents of going missing have stopped.”</i></b> Ofsted Inspection of Telford and Wrekin local authority children’s services April-May 2024 (Overall Rating “Outstanding”)</p>

## Priority – Child Sexual Exploitation & Child Exploitation

### Partnership work undertaken

- Prevent/Channel Panel and Steer Clear oversight. Collaborative working with Lived experienced CSE Survivors through ITTCSE joint CSE Review Group and Partnership Operation Group.
- Creation of “Explore More” document - co-produced with three individuals with lived experience.” is to support any practitioner working with children and young people to understand what sort of matters may indicate that a child or young person is being sexually exploited.
- Co-produced “Child Exploitation Week” Events. Presentation to multi agency Professionals and the roll out of in school explosion awareness session within Schools.

### Impact

*“Children benefit from an experienced team of specialist exploitation workers in the CATE team who provide an exceptional service for children when they are exploited or at risk of exploitation. They skilfully build relationships with children and their families, which supports the reduction of risk and improvement in children’s experiences. This includes disruption activity and referral to the National Referral Mechanism. An innovative and effective multi-agency transition panel plans services and interventions for children into adulthood.”* Ofsted Inspection of Telford and Wrekin local authority children’s services April-May 2024 (Overall Rating “Outstanding”)

#### **Independent Inquiry – Telford Child Sexual Exploitation (IITCSE)**

Telford & Wrekin Council agreed to commission an independent inquiry into child sexual exploitation within the Borough. It appointed the law firm Eversheds Sutherland (International) LLP as the Commissioning Body for the Inquiry. The Commissioning Body in turn appointed Tom Crowther KC to chair the Inquiry.

The purpose of the Inquiry was to fully investigate and establish the facts of child sexual exploitation in Telford & Wrekin, to identify if, and where, public, and other, services had failed and where possible, to establish who was accountable for any failure and to make recommendations for the future. The Inquiry report was published on 12 July 2022.

## Priority – Child Sexual Exploitation & Child Exploitation

### Partnership work undertaken

### Impact

In 2024, the Chair and the Commissioning Body conducted a two year review to examine the extent to which recommendations from the Inquiry’s report have been implemented. The report from that review was published on 16 July 2024. The following quotes are contained in the report of 16 July 2024. The full report can be found here <https://www.iitcse.com>

***“What I have found has been without exception positive. Of my 47 Recommendations, 38 have been fully implemented. Four remain in progress, but with real progress. Five were, I am told, impossible to put in place without national change.”*** Tom Crowther KC, Statement from the Chair, Publication Day Update 16th July 2024. Independent inquiry, Telford Child Sexual Exploitation

***“What is, in my view, most impressive, is how the response to my Recommendations have been developed with a group called the Independent Lived Experience Consultees – these are three people who were themselves, over the years, victims of exploitation in Telford.”*** Tom Crowther KC, Statement from the Chair, Publication Day Update 16th July 2024. Independent inquiry, Telford Child Sexual Exploitation

**Priority – Child Sexual Exploitation & Child Exploitation**

**Partnership work undertaken**

**Impact**

*“Here, the Consultees’ views have informed the implementation of Recommendations, not only in respect of social care and youth work but the Police, licensing, health and schools. Indeed there is no corner of this response that they have not touched, and the positivity and enthusiasm for what has been done, from the leaders of the services to those professionals at the sharp end, has been overwhelming.”* Tom Crowther KC, Statement from the Chair, Publication Day Update 16th July 2024. Independent inquiry, Telford Child Sexual Exploitation

*“People will not forget Telford’s history of child sexual exploitation – and nor should they. But in my view Telford’s approach – the Council’s approach – to the Recommendations, to engagement with its key partners and most of all with those three people it let down as children, now stands as a model.”* Tom Crowther KC, Statement from the Chair, Publication Day Update 16th July 2024. Independent inquiry, Telford Child Sexual Exploitation

[The Independent Inquiry into child sexual exploitation in Telford \(iitcse.com\)](http://iitcse.com)

# Consultation around new priorities in 2024-2025

Following the introduction of Working Together 2023, and in line with the Board's commitment to review its key priorities in 2024, several extraordinary Board meetings were arranged in early 2024 with this as a primary focus. The Board considered local and national data linked to current priorities and emerging areas of concern. Independent Chair, John Clement used multi-media platforms to consult directly with the young people of Telford and Wrekin, through established school safeguarding boards and Telford & Wrekin Council education links. Responses will be collated and made available at to Executive Safeguarding Children Board/Safeguarding Children Board by late September 2024.

Continuing with the Partnerships trajectory of developing its early help offer, as well as understanding the national concerns with children mental health and waiting times for services (which locally was identified through our QPD analysis), the Partners have suggested the following additional priorities.

- Improving the response to children emotional health needs
- Developing how we prevent harm to children and provide support at the earliest opportunity.

---

## Child Safeguarding Practice Review Panel

**The Safeguarding Children Board, Child Safeguarding Review Practice Review (CSPR) Panel oversees and administers all activity in connection to 16C (1) of the Children Act 2004 (as amended by the Children and Social work Act 2017). Additional to the complying with Children Act 2004, the Panel has delegated authority to undertake this activity to promote a culture of continuous learning and improvement across the organisations by using learning from reviews to drive improvements in practice.**

Since April 2023 the Panel has held two "Rapid Reviews" with both resulting in the need for a Local Safeguarding Practice Review. The first of these reviews was a Joint CSPR with a Safeguarding Partnership from within the London area and the second being fully overseen in Telford.

The Panel has worked closely with a trusted author to create a methodology for future Practice Reviews. The Board was of the view that methods, practices as well as the standard of reports differed greatly when commissioning authors. This methodology was designed to provide structure which would assure the Board that reviews are completed consistently to the necessary standard.

The Child Safeguarding Practice Review Panel works closely with the Quality Performance and Development Subgroup to review and create policies, develop and distribute briefings and to undertake audit activity to provide assurance to the Safeguarding Children Board that learning has been implemented and is effective. The Panel compiles and reviews a document that simplistically displays the Board identified safeguarding concerns/themes and cross references these current and evolving Board training offer.

---

## Quality Performance and Development

**Aligned with Working Together 2023, the Board has continued its progression into quantitative data analysis. Quality Performance and Development (QPD) compiles and analyses data from across the spectrum of the partners, in all areas linked to Safeguarding Children. This analysis is reported to Safeguarding Children Board which shapes and informs decisions.**

### MACFA Activity/Themes

QPD is responsible for undertaking and reporting on MACFA Activities to provide assurance to the board around propriety progress and practice implementation. The following themes have been covered through MACFA Activities, providing the Board with the assurance of embedded learning.

- Neglect CIN cases over 6 months
- Young People with SEND and EHCP, open to CATE
- “Think Family” – the Think Family agenda recognises and promotes the importance of a whole-family approach which is built on the principles of ‘Reaching out – think family’
- Confirm perceived/documented child diagnoses
- Deep Dive into PPO (Police Power of Protection) case
- Child Protection Plan over 12 months.

## 7 Minute Briefing and Policy Reviews

QPD Support requests from the Child and Safeguarding Practice Review (CSPR) Panel, to create 7-minute briefings (this system of communication was chosen based on research, which suggests that seven minutes is an ideal time span to concentrate and learn) linked to ongoing reviews, MACFA activity and thematic concerns and changes in policy.

The following briefings/policies have been created and distributed throughout the partnership:

- Non-Mobile Child Pathway
- Cultural Competence
- Procedure for the Management of Overdoses within Schools
- MARAC (7 Minute Briefing)
- Practice Guide (7 Minute Briefing)
- Trauma informed Practice (7 Minute Briefing)
- CSPR 3 and 10 Learning Briefings
- Information Sharing
- Professional Boundaries
- Professional Curiosity
- Best Practice Language Guide

## Training and development

We have continued to identify learning which crosses both Adult and Children Safeguarding Boards and consequently held our largest multi-agency event to date. Our partnership understands the importance of learning from people with lived experience. Consequently, we commissioned a lived experienced group to deliver “Trauma Informed Practice” Training to 280 professionals across all agencies in Telford and Wrekin.

Additional to bespoke training events, Telford and Wrekin Partnership continues to administer multiple online and face to face training sessions for all partner agencies. This training includes the continual roll out the latest partnerships “Threshold Guidance” (which has to date delivered this guidance to 498 professionals throughout the partnership), Raising awareness of Child Protection, Raising Awareness of Exploitation and Vulnerabilities, Understanding Child Death Reviews, Managing Allegations against staff and volunteers in a position of trust (LADO), Brook Traffic Light Tool and Raising Awareness of Private Fostering.



For 2024-2025, a key focus of our training offer will be on enhancing professional awareness in Initial and Review of Child Protection Meetings, Child in Need Meetings and Core Groups. The development of this package is a result of the work completed by Prof Jan Horwath in consultation with Telford lived experienced parent group “Dandelions”. Professor Jan Horwath was commissioned with the ask to of reviewing and offer recommendation around how the Board supports its Neglect offer. At Professor Horwath request, the Board facilitated multiple consultation sessions with parents (Dandelions), children and multi-agency front line practitioners to inform recommendations.

---

## Our future focus

- Following consultation, for the Board’s priorities agreed (with each priority to have a clear focus, understanding what progress looks like).
- Continued development of the Board’s multi-agency data dashboard to inform strategic oversight of the effectiveness of our multi-agency safeguarding arrangements.
- Continual focus on our exploitation response and development of a co-produced “Child Sexual Exploitation Strategy” between partners and lived experienced consultees.
- Develop our engagement offer, clear focus on the community and voluntary sector, sports and education settings.
- Implementation of the new Safeguarding Board Chair and independent scrutineer in line with Working Together to Safeguard Children 2023 publication of new and revised multi-agency safeguarding arrangements December 2024.

---

## A heartfelt thank you to...

- All the individuals and families who have taken the brave step to share their experiences and worked with us in pushing for change
- The 100s of professionals up and down the borough who have continued to support the partnership, their colleagues and the residents of Telford and Wrekin

To find out more about the Telford and Wrekin Safeguarding Partnership and access resources please visit [www.telfordsafeguardingpartnership.org.uk](http://www.telfordsafeguardingpartnership.org.uk)







This page is intentionally left blank

Children & Young People Scrutiny Work Programme 2024/25

Issue / Topic	Brief Description	Directorate	Council Values/Priorities	Format	Meeting Comments
7 November 2024 – Committee Meeting					
Terms of Reference	For the Committee to agree the Terms of Reference for 2024/25.	Policy & Governance	A community-focussed, innovative council providing efficient, effective and quality services.	Committee Agenda Item	Constitutional Function.
	Outcomes: Members agreed the terms of reference for the 2024/25 municipal year.				
Work Programme	For the Committee to agree the proposed work programme for 2024/25.	Policy & Governance	A community-focussed, innovative council providing efficient, effective and quality services.	Committee Agenda Item	Draft work programme delegated to each scrutiny committee by SMB on 3 September 2024.
	Outcomes: Members agreed the updated work programme for the 2024/25 municipal year.				
Children's Services Ofsted Inspection Outcome Report and Action Plan	For the Committee to receive an update on the outcome and actions arising from the July 2024 Ofsted inspection of Children's Services.	Children's Services	Every child, young person and adult lives well in their community.	Committee Agenda Item	New suggestion for 2024/25 work programme.
	Outcomes: Members received an update on the results of the recent ILACS inspection which took place between April and May 2024 and the Council's progress in completing actions as part of the action plan submitted following the inspection.				

Page 43

Agenda Item 6



Children & Young People Scrutiny Work Programme 2024/25

School Attendance	For the Committee to receive an update on school attendance and absenteeism for the preceding academic year.	Education & Skills	Every child, young person and adult lives well in their community.	Committee Agenda Item	New suggestion for 2024/25 work programme.
<p>Outcomes: The Committee received an update on the attendance statistics for Telford and Wrekin schools and how the Council were collaboratively working with schools and academies to implement the updated guidance around absenteeism published by the DfE in August 2024.</p>					



Children & Young People Scrutiny Work Programme 2024/25

Issue / Topic	Brief Description	Directorate	Council Values/Priorities	Format	Meeting Comments
30 January 2025 – Committee Meeting					
Annual Safeguarding Partnership Report	For the Committee to review the Annual Safeguarding Partnership Report from 2022/23 and 2023/24.	Policy & Governance  Safeguarding	Every child, young person and adult lives well in their community.	Committee Agenda Item	Standing Item.
Outcomes:					
Education Attainment and Outcomes 45	For the Committee to review the education attainment for the Borough for 2023/24.	Education & Skills	Every child, young person and adult lives well in their community.	Committee Agenda Item	Constitutional Function.
Outcomes:					



Children & Young People Scrutiny Work Programme 2024/25

Issue / Topic	Brief Description	Directorate	Council Values/Priorities	Format	Meeting Comments
27 March 2025 – Committee Meeting					
School Admissions and Placements	For the Committee to review the Council’s process for allocating school places across Telford and Wrekin.	Education & Skills	Every child, young person and adult lives well in their community.	Committee Agenda Item	New suggestion for 2024/25 work programme.
Outcomes:					



Issue / Topic	Brief Description	Directorate	Council Values/Priorities	Format	Meeting Comments
1 May 2025 – Committee Meeting					
SEND	For the Committee to receive an update on the Council's provision for SEND including identification, placements and funding.	Education & Skills	Every child, young person and adult lives well in their community.	Committee Agenda Item	New suggestion received for 2024/25 work programme.
	Outcomes:				

This page is intentionally left blank