

Public Document Pack



Telford & Wrekin
Co-operative Council

Protect, care and invest
to create a better borough

Borough of Telford and Wrekin

Health & Wellbeing Board

Wednesday, 22 June 2022

2.00 pm

Addenbrooke House, Ironmasters Way, Telford, TF3 4NT

Democratic Services: Lorna Gordon 01952 384978

Media Enquiries: Corporate Communications 01952 382406

Committee Members: M Brandreth, J Britton, Cllr A J Burford, S Dillon, J Dunn, Cllr I T W Fletcher, Cllr A D McClements (Chair), Cllr K Middleton, L Noakes, Nicky O'Connor, A Olver, B Parnaby, Dr J Pepper, Cllr S A W Reynolds, J Rowe and Cllr K T Tomlinson

	Agenda	Page
7.0	ICB Development Update including the proposed System Operating Model & Governance	(3 - 8)

This page is intentionally left blank

TELFORD AND WREKIN HEALTH AND WELLBEING BOARD

Meeting Date: 22 June 2022

Paper title: ICS update

1. Summary

Update on the progress regarding ICS development and governance arrangements for Shropshire, Telford and Wrekin

2. Recommendations

The board is asked to

- to note the detail contained in the report
- to comment on how HWBB members see the ICP and the HWBB working in partnership
- to support the approach for a strong 'placed based' approach to integration

3. Report

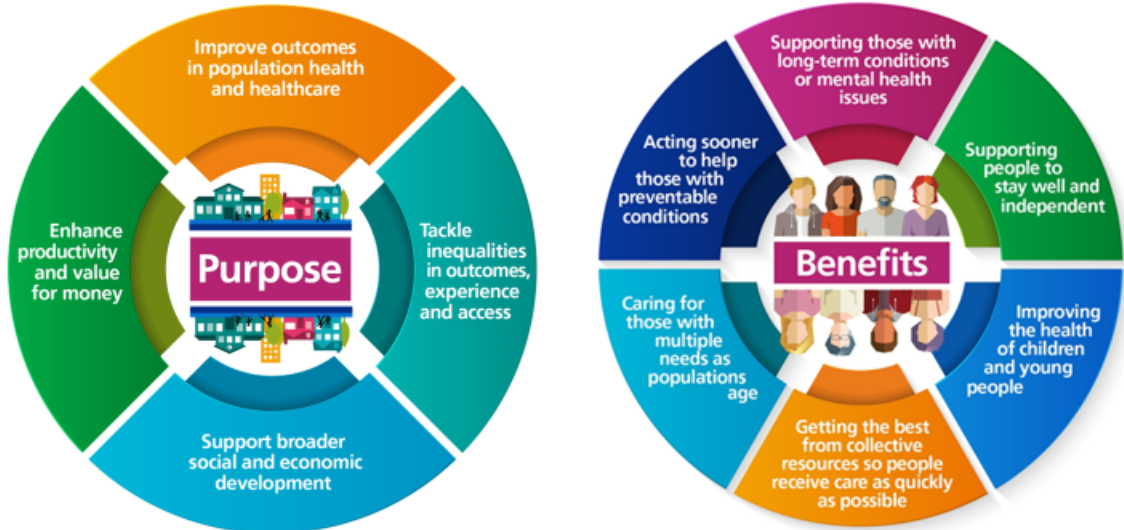
3.1 Context

This report is an update to the summary of the Integrated Care System (ICS) development programme in Shropshire, Telford and Wrekin presented at the last meeting of this board.

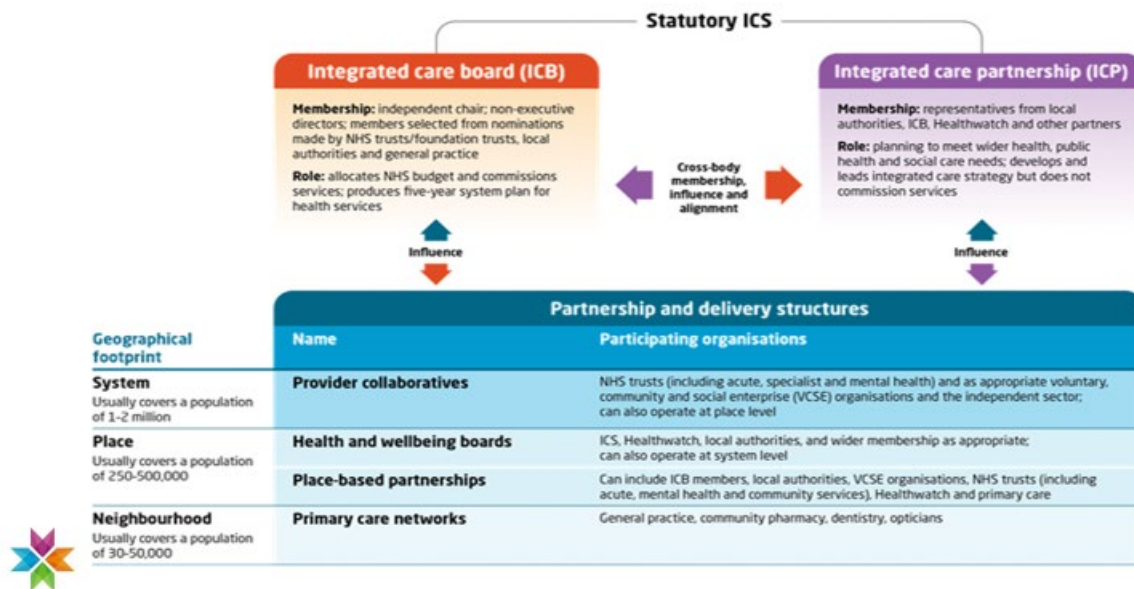
This paper is intended to provide an update on the most recent milestone of the ICS' journey to the establishment timeline of 1 July 2022, progress made on the establishment of statutory functions of the ICS, including the creation of the Integrated Care Partnership, and further steps to establishing infrastructure and service delivery in the future.

Integrated Care Systems

Partnerships of organisations that come together to plan and deliver joined up health and care services to improve the lives of people in their area.



What will the new system look like?



3.2 Progress and Assurance

All systems are expected to provide assurance along their journey towards becoming a new statutory organisation. Details and key milestones are set out in the NHSEI establishment timeline and systems were asked to share evidence of progress against the Readiness to Operate Statement (ROS) checklist on 31 March 2022 and 20 May 2022. STW ICS successfully submitted the checklist together with a detailed System Development plan (SDP) and other relevant evidence at both stages. Good feedback on the progress was received

from the region. The date of final checkpoint submission of the ROS was 10 June 2022. In addition to the ROS checklist and supporting evidence a signed Readiness to Operate Statement was required. In the statement the Chief Executive of the ICS and the NHS England and NHS Improvement Regional Director confirm that

- they are satisfied that adequate preparations have been made for the legal establishment of Shropshire, Telford and Wrekin Integrated Care Board with effect from 1 July 2022
- the Shropshire, Telford and Wrekin Integrated Care Board will be ready to fulfil its statutory functions from that point.
- that the Shropshire, Telford and Wrekin Integrated Care Board will develop as a new statutory organisation with ongoing support from NHS England.

3.3 Principles for and Expectations of Integrated Care Partnerships

STW ICS is working towards meeting the principles and expectations, set out in the guidance developed by the Department of Health and Social Care, NHS England and NHS Improvement and the Local Government Association (LGA)

Core Requirements for ICSs:

- Each ICS is required to have a statutory **Integrated Care Partnership (ICP)** – details of the partnership arrangements are being finalised through the ICP Terms of Reference.
- The ICP must have a minimum, lawfully required membership – membership is being finalised between ICP partners
- Once established the ICP must produce an **integrated care strategy** for their area - the ICP will ensure that an Integrated Care Strategy is developed. It will be focused on local needs at a place and neighbourhood level, informed by the Health and Wellbeing Strategies created by the two Health and Wellbeing Boards of Shropshire and Telford & Wrekin and by Joint Strategic Needs Assessments (JSNAs).

Expectations of Integrated Care Partnerships (ICPs)s:

- ICPs are a core part of ICSs, driving their direction and priorities
- ICPs will be rooted in the needs of people, communities, and places
- ICPs create a space to develop and oversee population health strategies to improve health outcomes and experiences
- ICPs will support integrated approaches and subsidiarity
- ICPs should take an open and inclusive approach to strategy development and leadership, involving communities and partners to utilise local data and insights.

Discussions around how STW ICP will operate at a system level to meet these expectations have progressed and a proposed model has been presented to the Region in early June.

The ICP will work in partnership with the two Health and Wellbeing Boards and both Place-Based Partnerships (Shropshire Integrated Place Partnership (ShIPP,) and Telford & Wrekin Integrated Place Partnership (TWIPP) while complementing their work. Ways of collaborating

in order to maximise the value of each group will be further developed. There will be a need to ensure that there are clear mechanisms to enable subsidiarity of decision making and that decisions are taken once at the most appropriate local level.

ICPs will play a crucial role within the system to bring together partners and look beyond traditional organisational boundaries to address population health, health inequalities and the wider determinants of health. This is the most important aspect of the ICS in terms of the difference that this can make for local people.

An ICP Steering group, comprised of members from the local authorities and the STW NHS Trust have been meeting over recent months to work towards meeting these requirements. TORs, governance and decision-making structures of the ICP have been drawn up and final details are currently being agreed.

Draft Terms and Conditions for the ICP board, including proposed membership and guiding principles have been drawn up and are currently being reviewed.

Establishment of the ICS

The following deliverables are required for the establishment of ICS's

- **Appointment of ICB Board members** – The board members for Shropshire, Telford and Wrekin ICS have been appointed, the first shadow board meeting of the ICB took place at the end of April 2022 and the new board will continue work in shadow form towards official establishment. The first meeting of the fully established ICB board is scheduled to take place on 1 July 2022.
- An **ICB constitution** – the STW constitution, setting out key governing principles has been approved and published by NHSE/I [21-nhs-shropshire-telford-and-wrekin-icb-constitution-010722.pdf \(england.nhs.uk\)](#)
- A **draft functions and decision map** – a detailed chart has been designed and submitted to NHSE/I in June in readiness for implementation from 1 July.
- **Quality and safety systems and functions** are being made ready to take effect from 1 July 2022, including implementation of System Quality Groups in line with the National Quality Board's guidance.

Other Partnership Arrangements within the ICS

Future provider partnership arrangements, including provider collaboratives, primary care networks and other collaborative arrangements are at progressed draft stage.

STW already has a very strong track record of clinical, professional and back-office collaboration both within and outside of the ICS, and one of the local providers (SaTH) provides a shared procurement service to three NHS organisations. As evidenced by the Hospital Transformation Programme, the System Sustainability Programme and People Plan, STW has worked together collaboratively and successfully to take a system view on estates, capital allocations, and workforce planning over recent months and years.

Engagement of and communication with ICS partners:

Further work to enable cultural change involving system partners will be undertaken; this will involve further clinical leadership within the system.

Engagement with and involvement of local people and communities is a key pre-requisite for the success of the ICS, therefore

- meeting minutes and papers will be available online

- local Healthwatch organisations will be involved
- people and communities of every system will be involved in the development of ICPs and the integrated care strategy
- people, staff and communities will be able to input into the planning and delivery of services and how services are going to be joined up
- TWIPP and SHIPP are developing their own priorities, reflecting the different needs of each local population
- Healthwatch and VCSE partners will have a critical role to play in supporting ICPs to stay rooted in the needs of people, communities, and places; the alliance with VCSE partners has been formalised in an MOU;

Resourcing

Investment in ICSs will improve partnerships and enable a better response to local needs, which will, in time, lead to a more efficient and sustainable system.

- Financial allocations in the ICS are currently administered through the CCG. Once the ICS becomes a new statutory body in July, funds will be agreed by the ICB which will include our 2 local authorities as members of the board.
- Work to agree how funding allocations and payment mechanisms apply to non-NHS partners, the appropriateness of the ICS financial risk and governance and standardised financial reporting and controls is ongoing.
- The CCG are continuing to develop policies/processes for safe financial system transition based on national guidance. This process will also be informed by an ongoing due diligence exercise and transition planning.

3. Conclusion

The Board is asked

- **to note** the detail contained in the report
- **to comment** on how HWBB members see the ICP and the HWBB working in partnership
- **to support** the approach for a strong 'placed based' approach to integration.

This page is intentionally left blank